

RHODE ISLAND FOOD SYSTEM
2016 SNAPSHOT

PAWTUCKET

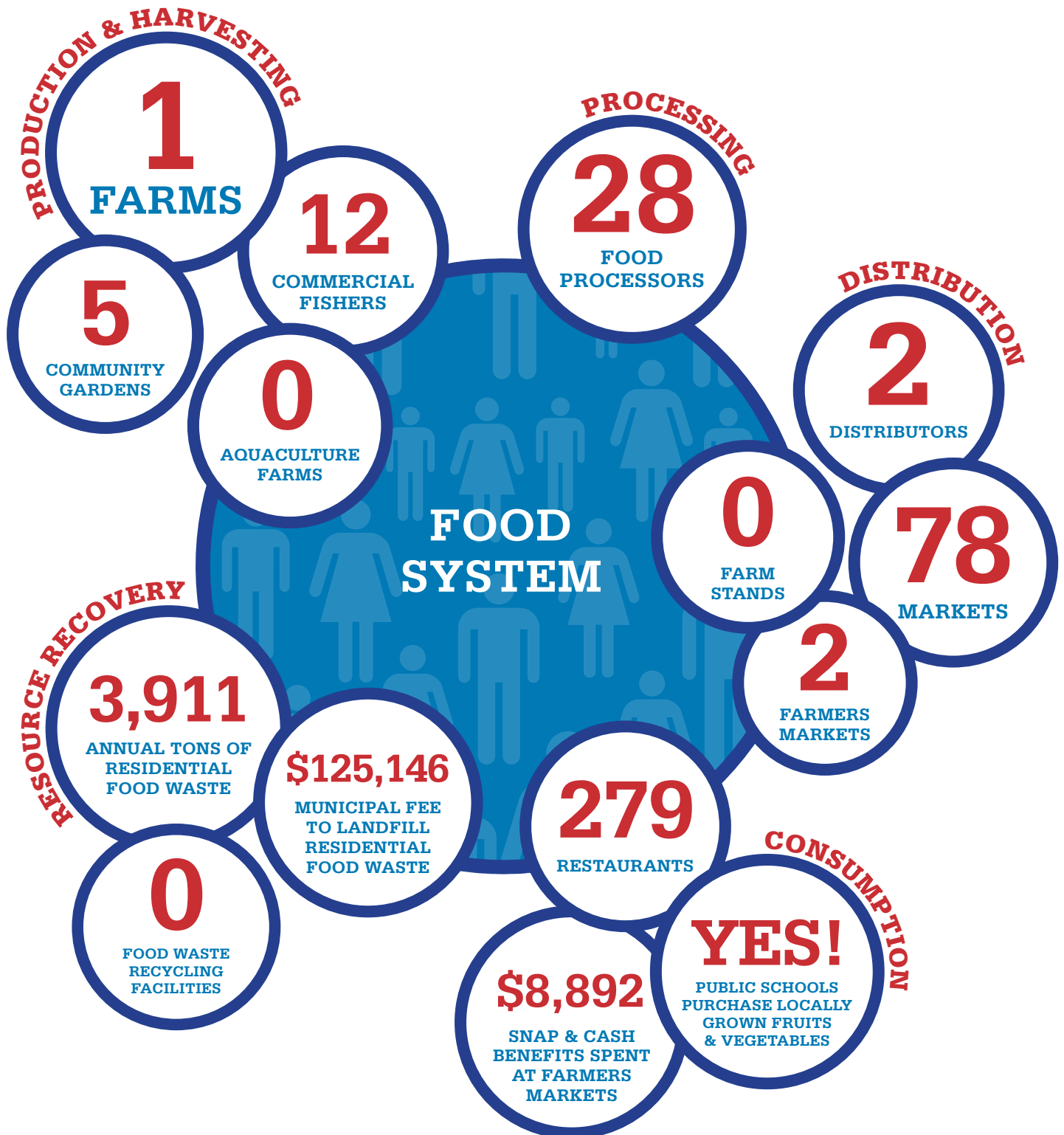
POPULATION 71,148



RHODE ISLAND FOOD SYSTEM
2016 SNAPSHOT

PAWTUCKET

POPULATION 71,148



RHODE ISLAND FOOD SYSTEM
2016 SNAPSHOT

PAWTUCKET

POPULATION 71,148



DID YOU KNOW?

Rhode Island saw an 11.2% increase in food system jobs, and a 3.2% increase in food system businesses over the past 5 years.

STATE FOOD SYSTEM DATA

BUSINESSES

7,820

JOBS

66,770

RHODE ISLAND FOOD SYSTEM: 2016 SNAPSHOTS

This fact sheet is one of a series developed for every Rhode Island municipality, in order to give Rhode Islanders a better sense of the current impact the food system has on individual communities, and a better understanding of the network of businesses, agencies, organizations and institutions that make up our local food system. A *food system* encompasses all of the processes involved in feeding people: it includes the production, harvesting, and processing of food; its distribution and marketing; its consumption (whether at home, in schools and institutions, or in restaurants); and ultimately, the recycling or disposal of food waste. The fact sheets present a dynamic “snapshot” of the local food system, and provide data to track and measure progress towards growing our food system. Data is aggregated from a range of sources, so we invite corrections or additional information that will help us more accurately represent Rhode Island’s local food system.

DEFINITIONS AND DATA SOURCES

RHODE ISLAND FOOD SYSTEM

PRODUCTION & HARVESTING

Farms

The 2012 USDA Census of Agriculture estimates there are 1,243 farms in RI but does not provide data by municipality. No single RI entity maintains a count of farms by municipality. The numbers provided are the best data available at this time.

Sources: RIDEM June 2015; Farm Fresh RI, Aquidneck Community Table website, survey of municipal planning staff, August 2016

Aquaculture Farms

Includes all aquaculture farms that lease submerged land in state waters. Individual businesses may have more than one farm, but each farm is counted as distinct. Source: RI CRMC, August 2016

Commercial Fishers

Includes municipal residents who hold any type of commercial fishing license for fish and/or shellfish and/or crustaceans. Source: RIDEM, August 2016

Community Gardens

Includes (1) public/private properties that provide plots of land on which people raise food mainly for household consumption, and (2) public/private properties on which volunteers raise food for the RI Community Food Bank and food pantries. Sources: Numbers compiled as of September, 2016 from sources including Farm Fresh RI, Aquidneck Community Table website, survey of religious institutions, and municipal planning staff

PROCESSING

Food Processors

Includes processing businesses that process raw fruits and vegetables, meat, seafood and milk into value-added products. Source: RIDOH licensee list, accessed September 2016

DISTRIBUTION

Distributors

Includes business involved in transporting and warehousing raw and processed foods. Source: RIDOH licensee list, accessed September 2016

Markets

Includes supermarkets, grocery and convenience stores, and food peddlers. Source: RIDOH licensee list, accessed November 2016

Farmers Markets

Includes WIC program Pop-Up Markets. Source: Farm Fresh RI, Aquidneck Community Table website, RIDOH WIC Program, September 2016

Farmstands

Source: Farm Fresh RI, survey of municipal planning staff, August 2016

CONSUMPTION

Restaurants

Includes full service, limited service, and fast food restaurants, cafeterias, dining facilities, and food trucks. Source: RIDOH licensee list, accessed November 2016

SNAP and Cash Benefits Spent at Farmer’s Markets

Spending from June–December, 2015
Source: Farm Fresh RI, 2016

Public Schools Purchase Locally Grown Food

Source: RIDE, 2016

RESOURCE RECOVERY

Annual Tons of Residential Food Waste estimated

Municipal Fee to Landfill Residential Food Waste estimated

Tipping fees are the fees (per ton) paid for waste disposal. Municipal tipping fees at RIRRC are currently \$32 per ton. Source: Estimates provided by RI Resource Recovery Corporation based on 2015 waste tonnage

Food Waste Recycling Facilities

Includes all composting and/or anaerobic digestion facilities that are currently processing food waste with a state license. Source: RIDEM, June 2016

COMMUNITY NEEDS AND RESOURCES

Participants in SNAP and WIC

Source: URI Feinstein Center for a Hunger Free America, April 2016; RIDOH WIC Program, June 2016

Participants Receiving Meals on Wheels Home Delivery

Includes all individuals receiving meals through Meals on Wheels Home Delivery Service. Source: Meals on Wheels of RI 2015 statistics

Students Eligible for Free/Reduced Meals

To be eligible for free/reduced meals, a child’s household income must fall below 185% of the federal poverty guideline. Source: 2016 RI KIDS COUNT Factbook

Food Pantries

Includes sites that provide free food to households in need. Source: RI Community Food Bank Emergency Food Provider List, survey of religious institutions and municipal planning staff, August 2016; RI Coalition for the Homeless Street Sheets, May 2016

Congregate Meal Sites

Includes sites that provide low or no-cost meals in a group setting for individuals in need. Source: RI Community Food Bank Emergency Food Provider List, August 2016; web pages for Senior Services Inc., Meals on Wheels, East Bay CAP, and West Bay CAP, Aquidneck Community Table website, September 2016; RI Coalition for the Homeless Street Sheets, May 2016

FOOD JOBS AND FOOD BUSINESSES

Data from Quarterly Census of Employment and Wages, Nonemployer Statistics, and USDA Census of Agriculture. Source: ProvPlan, October 2016