

RHODE ISLAND FOOD SYSTEM
2017 SNAPSHOT

GLOCESTER

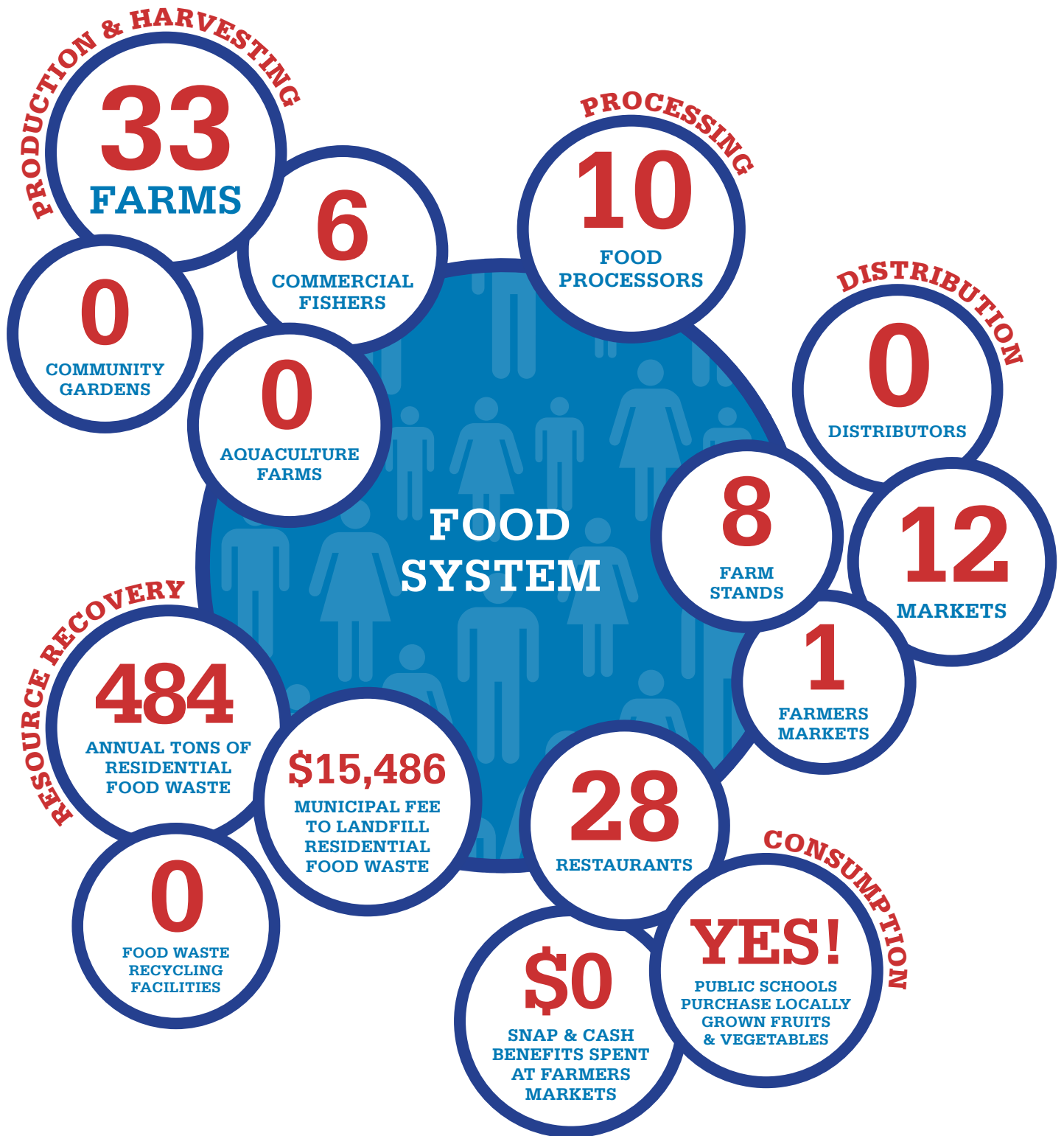
POPULATION 9,746



RHODE ISLAND FOOD SYSTEM
2017 SNAPSHOT

GLOCESTER

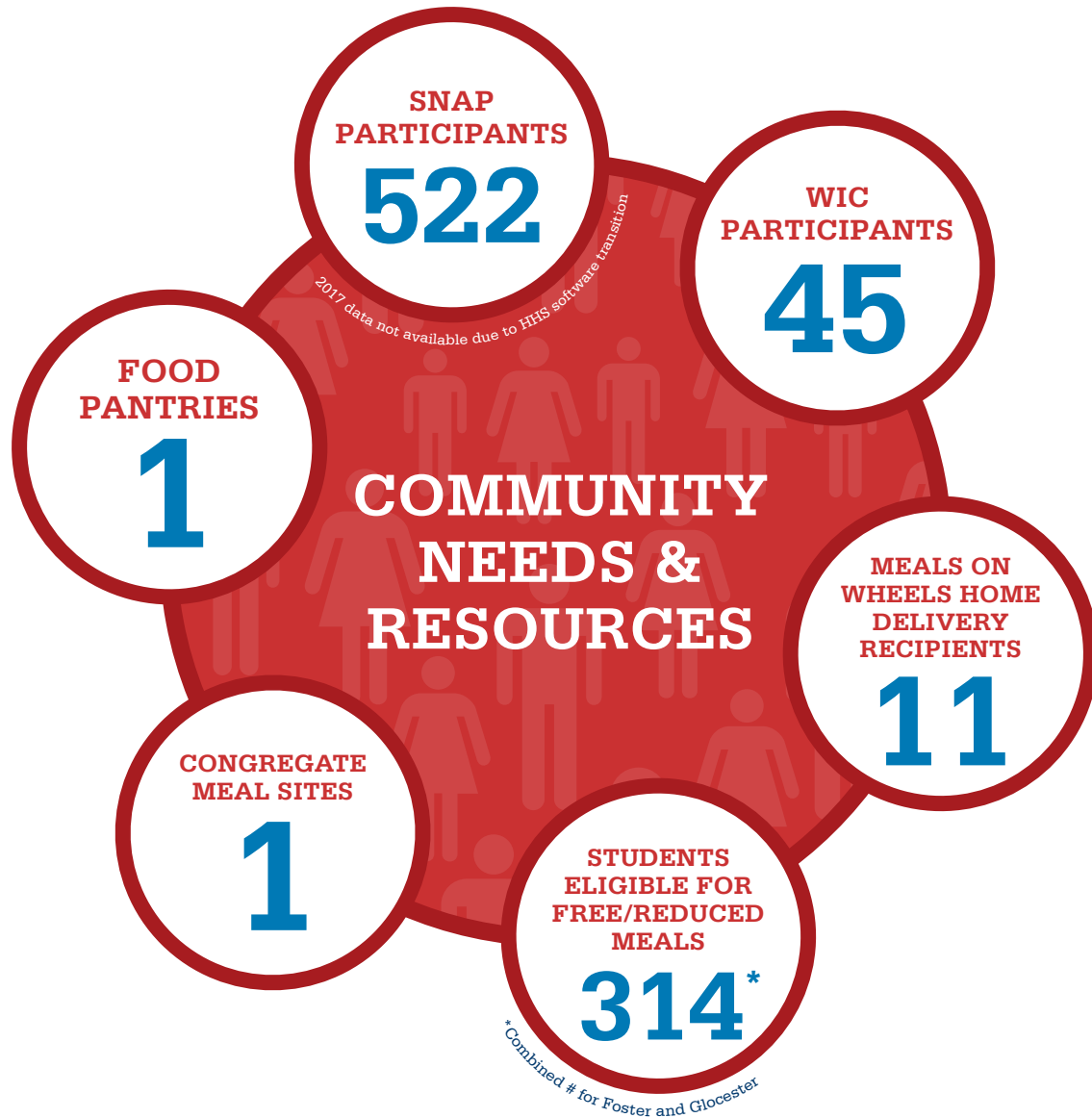
POPULATION 9,746



RHODE ISLAND FOOD SYSTEM
2017 SNAPSHOT

GLOCESTER

POPULATION 9,746



DID YOU KNOW?

Rhode Island released its first Food Strategy in 2017: Relish Rhody! Learn more and get involved at www.relishrhody.com

STATE FOOD SYSTEM DATA

BUSINESSES

7,755

JOBS

69,441

Want to see more Snapshots or compare year-to-year? Visit rifoodcouncil.org/ri-food-system-snapshots/

RHODE ISLAND FOOD SYSTEM: 2017 SNAPSHOTS

This fact sheet is one of a series developed for every Rhode Island municipality (and the State as a whole), to give Rhode Islanders a better understanding of our local food system. A *food system* encompasses all of the processes involved in feeding people: it includes the production, harvesting, and processing of food; its distribution and marketing; its consumption (whether at home, in schools and institutions, or in restaurants); and the recycling or disposal of food waste. The fact sheets present a dynamic “snapshot” of the local food system, and provide data to track and measure progress towards its growth. Data is aggregated from a range of sources, so we invite corrections or additional information that will help us more accurately represent Rhode Island’s local food system. All 2015-2017 Fact Sheets can be found at rifoodcouncil.org/ri-food-system-snapshots/.

DEFINITIONS AND DATA SOURCES

RI FOOD SYSTEM

PRODUCTION & HARVESTING

Farms

The 2012 USDA Census of Agriculture estimates there are 1,243 farms in RI but does not provide data by municipality. No single RI entity maintains a count of farms by municipality. The numbers provided are the best data available at this time. Sources: RIDEM June 2015, Farm Fresh RI, Aquidneck Community Table, Charlestown Agricultural Preservation Commission, NOFA RI, survey of municipal planning staff, September 2017

Aquaculture Farms

Includes all aquaculture farms that lease submerged land in state waters. Individual businesses may have more than one farm, but each farm is counted as distinct. Source: RI CRMC, August 2017

Commercial Fishers

Includes municipal residents who hold any type of commercial fishing license for fish and/or shellfish and/or crustaceans. Source: RIDEM, August 2017

Community Gardens

Includes public/private properties on which: (1) people raise food for household consumption, and (2) volunteers raise food for food banks/pantries. Home and school gardens are not included. Sources: Numbers compiled as of September 2017 from multiple sources, including Farm Fresh RI, a 2016 survey of religious institutions, and a 2017 survey of municipal planning staff

PROCESSING

Food Processors

Includes processing businesses that process raw fruits and vegetables, milk meat, and seafood into value-added products. Source: RIDOH licensee list, September 2017

DISTRIBUTION

Distributors

Includes businesses involved in transporting and warehousing raw and processed foods. Source: RIDOH licensee list, September 2017

Markets

Includes supermarkets, grocery and convenience stores, and food peddlers.

Source: RIDOH licensee list, September 2017

Farmers Markets

Includes WIC program Pop-Up Markets.

Farm Fresh RI, Aquidneck Community Table, WIC Program, September 2017

Farmstands

Includes on-site and on-farm sales.

Source: Farm Fresh RI, survey of municipal planners, September 2017

CONSUMPTION

Restaurants

Includes full service, limited service, fast food restaurants, cafeterias, dining facilities, and food trucks. Source: RIDOH licensee list, September 2017

Public Schools Purchase Locally Grown Food

Source: USDA Farm to School Census

SNAP and Cash Benefits Spent at Farmer's Markets

Spending from January–December 2016. Source: Farm Fresh RI, 2017

WIC and Senior Farmer's Market Nutrition Program Vouchers Redeemed at Farmer's Markets (State only)

Spending from January–December 2016. Source: Farm Fresh RI, 2017

RESOURCE RECOVERY

Annual Tons of Residential Food Waste and Commercial Food Waste (State only); Municipal Fee to Landfill Residential Food Waste

Tipping fees are the fees (per ton) paid for disposal. Municipal tipping fees at RIRRC are currently \$32 per ton. Source: Estimates provided by RIRRC (2016 waste tonnage)

Food Waste Recycling Facilities

Includes all composting and/or anaerobic digestion facilities currently licensed to process food waste. Source:

RIDEM, November 2017

COMMUNITY NEEDS AND RESOURCES

Participants in SNAP and WIC

Source: URI Feinstein Center for a Hunger Free America, September 2017; RIDOH WIC Program, June 2017

Participants Receiving Meals on Wheels Home Delivery

Includes all individuals receiving meals through Meals on Wheels Home Delivery Service. Source: Meals on Wheels of RI, 2016

Students Eligible for Free or Reduced Meals

Eligibility based on a child’s household income falling below 185% of the federal poverty guideline. Children in foster care, and households receiving SNAP Benefits or in Rhode Island Works Program are automatically eligible. Source: 2016 RI KIDS COUNT Factbook

Food Pantries

Includes sites that provide free food to households in need. Source: RI Community Food Bank Emergency Food Provider List, January 2017; survey of religious institutions, August 2016; survey of municipal planning staff, September 2017; RI Coalition for the Homeless Street Sheets, February 2017

Congregate Meal Sites

Includes sites that provide low or no-cost meals in a group setting for individuals in need. Source: RI Community Food Bank Food Assistance Provider List, January 2017; Aquidneck Community Table; Senior Services Inc., Meals on Wheels, East Bay CAP, and West Bay CAP, September 2017; RI Coalition for the Homeless Street Sheets, February 2017

FOOD JOBS AND FOOD BUSINESSES

Data from Quarterly Census of Employment and Wages, Nonemployer Statistics, and USDA Census of Agriculture. Source: Scott Sawyer, Vermont Farm-to-Plate; New England Community of Practice, December 2017