

RHODE ISLAND FOOD SYSTEM  
2017 SNAPSHOT

# RICHMOND

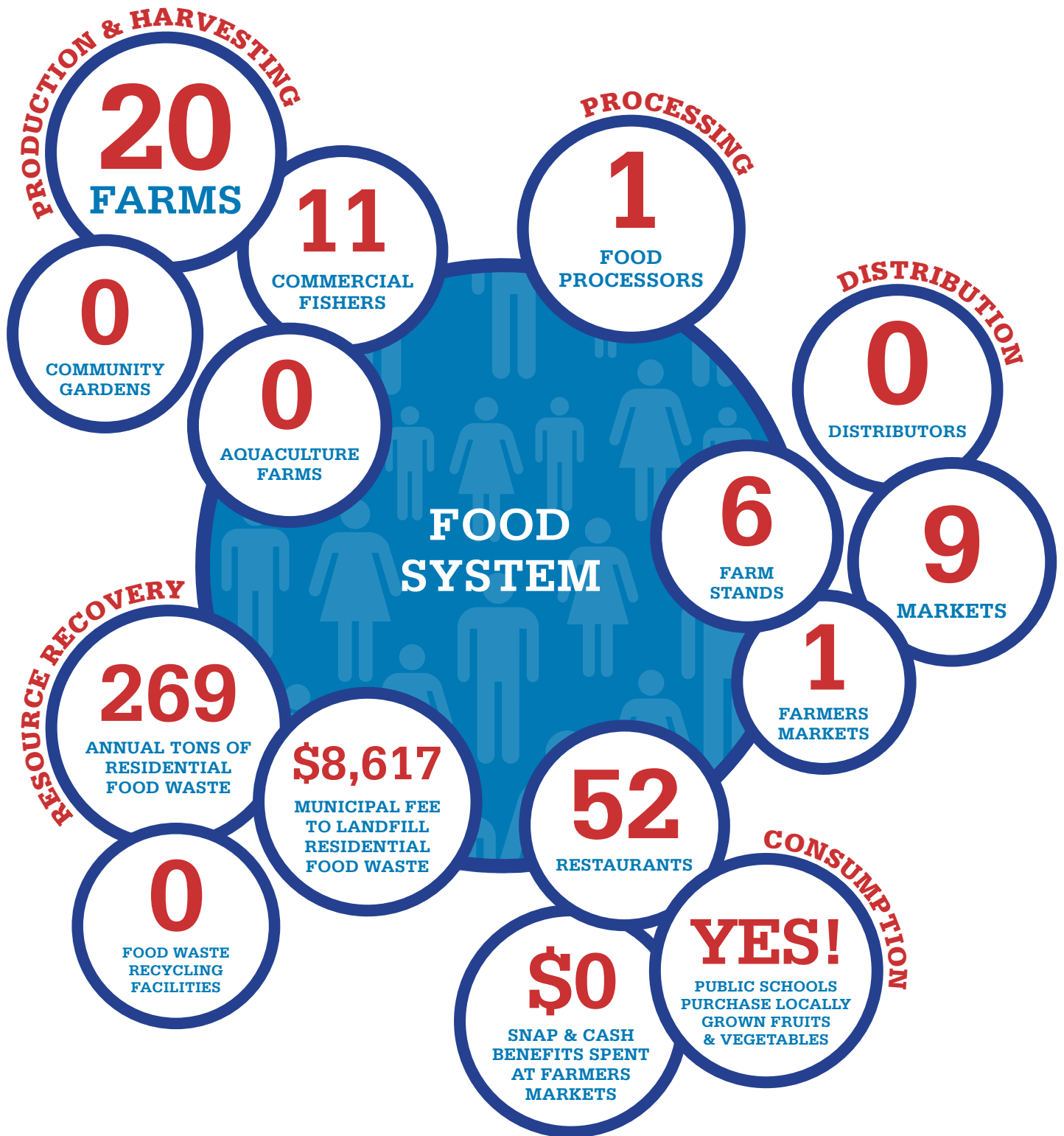
POPULATION 7,708



RHODE ISLAND FOOD SYSTEM  
2017 SNAPSHOT

**RICHMOND**

POPULATION 7,708



RHODE ISLAND FOOD SYSTEM  
2017 SNAPSHOT

# RICHMOND

POPULATION 7,708



## DID YOU KNOW?

Rhode Island released its first Food Strategy in 2017: Relish Rhody! Learn more and get involved at [www.relishrhody.com](http://www.relishrhody.com)

## STATE FOOD SYSTEM DATA

BUSINESSES

7,755

JOBS

69,441

Want to see more Snapshots or compare year-to-year? Visit [rifoodcouncil.org/ri-food-system-snapshots/](http://rifoodcouncil.org/ri-food-system-snapshots/)

# RHODE ISLAND FOOD SYSTEM: 2017 SNAPSHOTS

This fact sheet is one of a series developed for every Rhode Island municipality (and the State as a whole), to give Rhode Islanders a better understanding of our local food system. A *food system* encompasses all of the processes involved in feeding people: it includes the production, harvesting, and processing of food; its distribution and marketing; its consumption (whether at home, in schools and institutions, or in restaurants); and the recycling or disposal of food waste. The fact sheets present a dynamic “snapshot” of the local food system, and provide data to track and measure progress towards its growth. Data is aggregated from a range of sources, so we invite corrections or additional information that will help us more accurately represent Rhode Island’s local food system. All 2015-2017 Fact Sheets can be found at [rifoodcouncil.org/ri-food-system-snapshots/](http://rifoodcouncil.org/ri-food-system-snapshots/).

## DEFINITIONS AND DATA SOURCES

### RI FOOD SYSTEM

#### PRODUCTION & HARVESTING

##### Farms

The 2012 USDA Census of Agriculture estimates there are 1,243 farms in RI but does not provide data by municipality. No single RI entity maintains a count of farms by municipality. The numbers provided are the best data available at this time. Sources: RIDEM June 2015, Farm Fresh RI, Aquidneck Community Table, Charlestown Agricultural Preservation Commission, NOFA RI, survey of municipal planning staff, September 2017

##### Aquaculture Farms

Includes all aquaculture farms that lease submerged land in state waters. Individual businesses may have more than one farm, but each farm is counted as distinct. Source: RI CRMC, August 2017

##### Commercial Fishers

Includes municipal residents who hold any type of commercial fishing license for fish and/or shellfish and/or crustaceans. Source: RIDEM, August 2017

##### Community Gardens

Includes public/private properties on which: (1) people raise food for household consumption, and (2) volunteers raise food for food banks/panttries. Home and school gardens are not included. Sources: Numbers compiled as of September 2017 from multiple sources, including Farm Fresh RI, a 2016 survey of religious institutions, and a 2017 survey of municipal planning staff

#### PROCESSING

##### Food Processors

Includes processing businesses that process raw fruits and vegetables, milk meat, and seafood into value-added products. Source: RIDOH licensee list, September 2017

#### DISTRIBUTION

##### Distributors

Includes businesses involved in transporting and warehousing raw and processed foods. Source: RIDOH licensee list, September 2017

##### Markets

Includes supermarkets, grocery and convenience stores, and food peddlers.

Source: RIDOH licensee list, September 2017

##### Farmers Markets

Includes WIC program Pop-Up Markets.

Farm Fresh RI, Aquidneck Community Table, WIC Program, September 2017

##### Farmstands

Includes on-site and on-farm sales.

Source: Farm Fresh RI, survey of municipal planners, September 2017

#### CONSUMPTION

##### Restaurants

Includes full service, limited service, fast food restaurants, cafeterias, dining facilities, and food trucks. Source: RIDOH

licensee list, September 2017

##### Public Schools Purchase Locally Grown Food

Source: USDA Farm to School Census

##### SNAP and Cash Benefits Spent at Farmer's Markets

Spending from January–December 2016.

Source: Farm Fresh RI, 2017

##### WIC and Senior Farmer's Market Nutrition Program Vouchers Redeemed at Farmer's Markets (State only)

Spending from January–December 2016.

Source: Farm Fresh RI, 2017

#### RESOURCE RECOVERY

##### Annual Tons of Residential Food Waste and Commercial Food Waste (State only); Municipal Fee to Landfill Residential Food Waste

Tipping fees are the fees (per ton) paid for disposal. Municipal tipping fees at RIRRC are currently \$32 per ton. Source: Estimates provided by RIRRC (2016 waste tonnage)

##### Food Waste Recycling Facilities

Includes all composting and/or anaerobic digestion facilities currently licensed to process food waste. Source:

RIDEM, November 2017

### COMMUNITY NEEDS AND RESOURCES

#### Participants in SNAP and WIC

Source: URI Feinstein Center for a Hunger Free America, September 2017; RIDOH WIC Program, June 2017

#### Participants Receiving Meals on Wheels Home Delivery

Includes all individuals receiving meals through Meals on Wheels Home Delivery Service. Source: Meals on Wheels of RI, 2016

#### Students Eligible for Free or Reduced Meals

Eligibility based on a child’s household income falling below 185% of the federal poverty guideline. Children in foster care, and households receiving SNAP Benefits or in Rhode Island Works Program are automatically eligible. Source: 2016 RI KIDS COUNT Factbook

#### Food Pantries

Includes sites that provide free food to households in need. Source: RI Community Food Bank Emergency Food Provider List, January 2017; survey of religious institutions, August 2016; survey of municipal planning staff, September 2017; RI Coalition for the Homeless Street Sheets, February 2017

#### Congregate Meal Sites

Includes sites that provide low or no-cost meals in a group setting for individuals in need. Source: RI Community Food Bank Food Assistance Provider List, January 2017; Aquidneck Community Table; Senior Services Inc., Meals on Wheels, East Bay CAP, and West Bay CAP, September 2017; RI Coalition for the Homeless Street Sheets, February 2017

### FOOD JOBS AND FOOD BUSINESSES

Data from Quarterly Census of Employment and Wages, Nonemployer Statistics, and USDA Census of Agriculture. Source: Scott Sawyer, Vermont Farm-to-Plate; New England Community of Practice, December 2017