

RHODE ISLAND FOOD SYSTEM
2015 SNAPSHOT

HOPKINTON

POPULATION 8,188



RHODE ISLAND FOOD SYSTEM
2015 SNAPSHOT

HOPKINTON

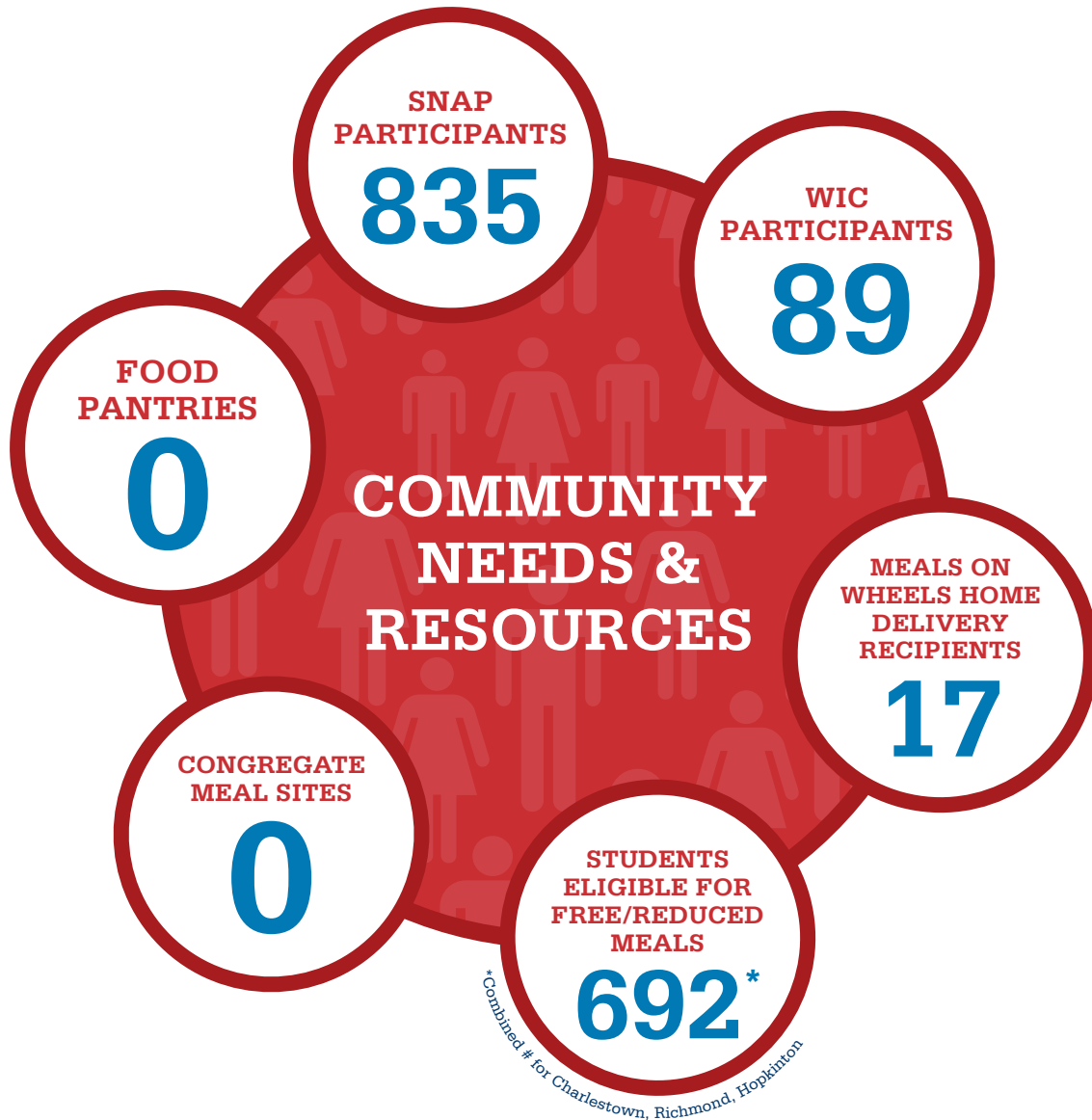
POPULATION 8,188



RHODE ISLAND FOOD SYSTEM
2015 SNAPSHOT

HOPKINTON

POPULATION 8,188



DID YOU KNOW?

The Rhode Island Maple Syrup Producers Association (RIMSPA) was formed in 2012 and is based in Ashaway.

STATE FOOD SYSTEM DATA

BUSINESSES

7,023

JOBS

65,605

RHODE ISLAND FOOD SYSTEM: 2015 SNAPSHOTS

This fact sheet is one of a series developed for every Rhode Island municipality. The Fact Sheets are intended to give Rhode Islanders a better sense of the current impact the food system has on individual communities, and a better understanding of the network of businesses, agencies, organizations and institutions that make up our local food system. A *food system* encompasses all of the processes involved in feeding people: it includes the production, harvesting, and processing of food; its distribution and marketing; its consumption (whether at home, in schools and institutions, or in restaurants); and ultimately, the recycling or disposal of food waste. The fact sheets present a dynamic “snapshot” of the local food system, and we hope they will stimulate discussion about growing the local food system and using data to track and measure progress. This is a first attempt to pull together data from a range of sources, however, so we invite corrections or additional information that will help us more accurately represent Rhode Island’s local food system.

DEFINITIONS AND DATA SOURCES

POPULATION

Source: US Census Bureau, 2010

RHODE ISLAND FOOD SYSTEM

PRODUCTION & HARVESTING

Farms

The 2012 USDA Census of Agriculture estimates there are 1,243 farms in RI but does not provide data by municipality. No single RI entity maintains a count of farms by municipality. The numbers provided are the best data available at this time.

Sources: RIDEM, Farm Fresh RI website, June 2015

Aquaculture Farms

Includes all aquaculture farms that lease submerged land in state waters.

Source: RI CRMC, June 2015

Commercial Fishers

Includes municipal residents who hold any type of commercial fishing license for fish and/or shellfish.

Source: RIDEM, June 2015

Community Gardens

Includes (1) public/private properties that provide plots of land on which people raise food mainly for household consumption, and (2) public/private properties on which volunteers raise food for the RI Community Food Bank and food pantries.

Sources: Numbers compiled as of June, 2015 from multiple sources, including Farm Fresh RI, a 2014 survey of religious institutions, and municipal planning staff

PROCESSING

Food Processors

Includes businesses that process raw fruits and vegetables, meat, seafood and milk into value-added products.

Source: RIDOH licensee list, accessed May 2015

DISTRIBUTION

Distributors

Includes businesses involved in transporting and warehousing raw and processed foods.

Source: RIDOH licensee list, accessed May 2015

Markets

Includes supermarkets, grocery, and convenience stores.

Source: RIDOH licensee list, accessed May 2015

Farmers Markets

Source: Farm Fresh RI website, June 2015

Farmstands

Source: Farm Fresh RI website, October 2015

CONSUMPTION

Restaurants

Includes full service, limited service, fast food restaurants and food trucks.

Source: RIDOH licensee list, accessed May 2015

Public Schools Purchase Locally Grown Food

Source: RIDE, 2015

RESOURCE RECOVERY

Annual Tons of Residential Food Waste *estimated*

Annual Tons of Commercial Food Waste *estimated*

Municipal Fee to Landfill Residential Food Waste *estimated*

Municipalities currently pay a fee of \$32/ton for waste disposal. Total fee is based on estimated tons of residential food waste.

Source: Estimates provided by RI Resource Recovery Corporation based on 2014 waste tonnage

Food Waste Recycling Facilities

Includes all composting and/or anaerobic digestion facilities that are currently processing food waste with a state license.

Source: RIDEM, June 2015

COMMUNITY NEEDS AND RESOURCES

Participants in SNAP and WIC

Source: URI Center for a Hunger Free America, SNAP and WIC, June 2015

Participants Receiving Meals on Wheels Home Delivery

Includes all individuals receiving meals through Meals on Wheels Home Delivery Service.

Source: Meals on Wheels of RI 2014 statistics

Students Eligible for Free/Reduced Meals

To be eligible for free/reduced meals, a child’s household income must fall below 185% of the federal poverty guideline. Children in foster care, and households receiving SNAP Benefits or in the Rhode Island Works Program are automatically eligible.

Source: 2015 RI KIDS COUNT Factbook

Food Pantries

Includes sites that provide free food to households in need.

Source: RI Community Food Bank Emergency Food Provider List, May 2015

Congregate Meal Sites

Includes sites that provide low or no-cost meals in a group setting for individuals in need.

Source: RI Community Food Bank Emergency Food Provider List, May, 2015; web pages for Senior Services Inc., Meals on Wheels, East Bay CAP, and West Bay CAP.

FOOD JOBS AND FOOD BUSINESSES

Data from Quarterly Census of Employment and Wages, Nonemployer Statistics, and USDA Census of Agriculture, 2012.

Source: ProvPlan, July 2015