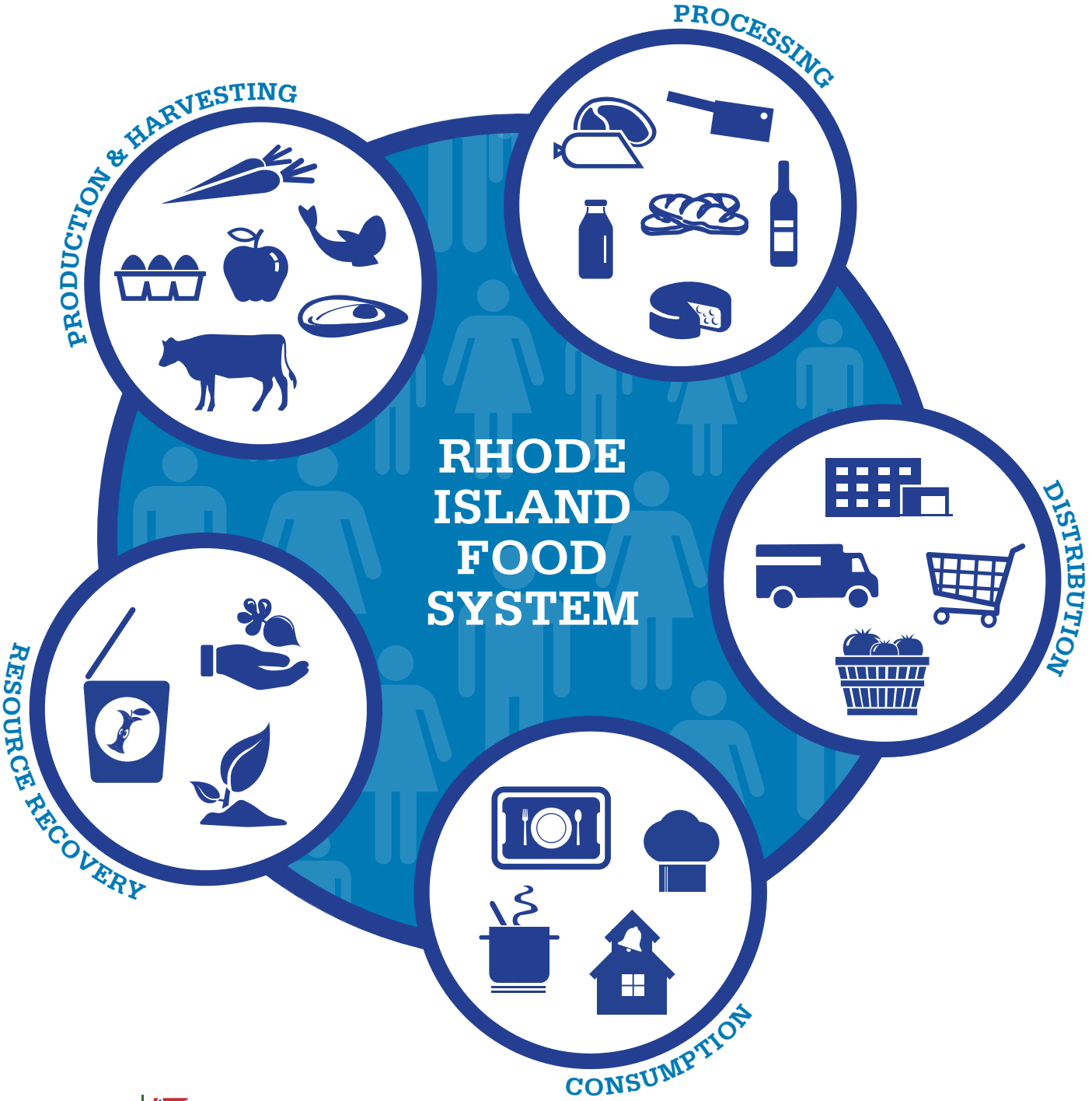


RHODE ISLAND FOOD SYSTEM 2015 SNAPSHOT



RI Food Policy Council



October 14, 2015

Dear Reader,

Enclosed you will find Food System Snapshots for all 39 cities and towns in Rhode Island, as well as for the state as a whole. We developed these fact sheets to increase understanding and awareness of the food system in our state. We hope that public officials, community leaders, planners, and advocates can use this data to bring attention to the importance of food system impacts and issues – economic, social, and environmental – at the local level, and that local residents can have access to basic food systems information important to their lives.

The fact sheets present information from diverse, existing databases at a moment in time, summer 2015. While the 2015 fact sheets standing alone are static documents, over time, as the future series of “snapshots” are developed, the set as a whole can provide a dynamic picture of the evolving food system in our state and its communities. Further, each year’s “snapshots” will incorporate the feedback we receive to improve the content and methods of data collection. We look forward to developing data that is increasingly useful to local communities and to those working on the ground to strengthen food systems at the local and state levels.

Please share with us any thoughts on what material would be helpful to include in the fact sheets in coming years, recommendations you may have for more precise or reliable resources from which to collect data point information, or any other suggestions you have for making the fact sheets more useful.

Developing these city and town food system fact sheets has been an interesting project. We did not have a formula, road map, or experience from other jurisdictions to draw on, and throughout the process we have encountered challenges and made discoveries that we were not expecting. The work has been an adventure and has involved a multi-agency team effort; we genuinely appreciate all of the cooperation we have been given. We are excited to provide Rhode Island a first: comprehensive locality-by-locality information about the food system in a state.

Sincerely,

The Rhode Island Food Policy Council

RHODE ISLAND FOOD SYSTEM
2015 SNAPSHOT

RHODE ISLAND

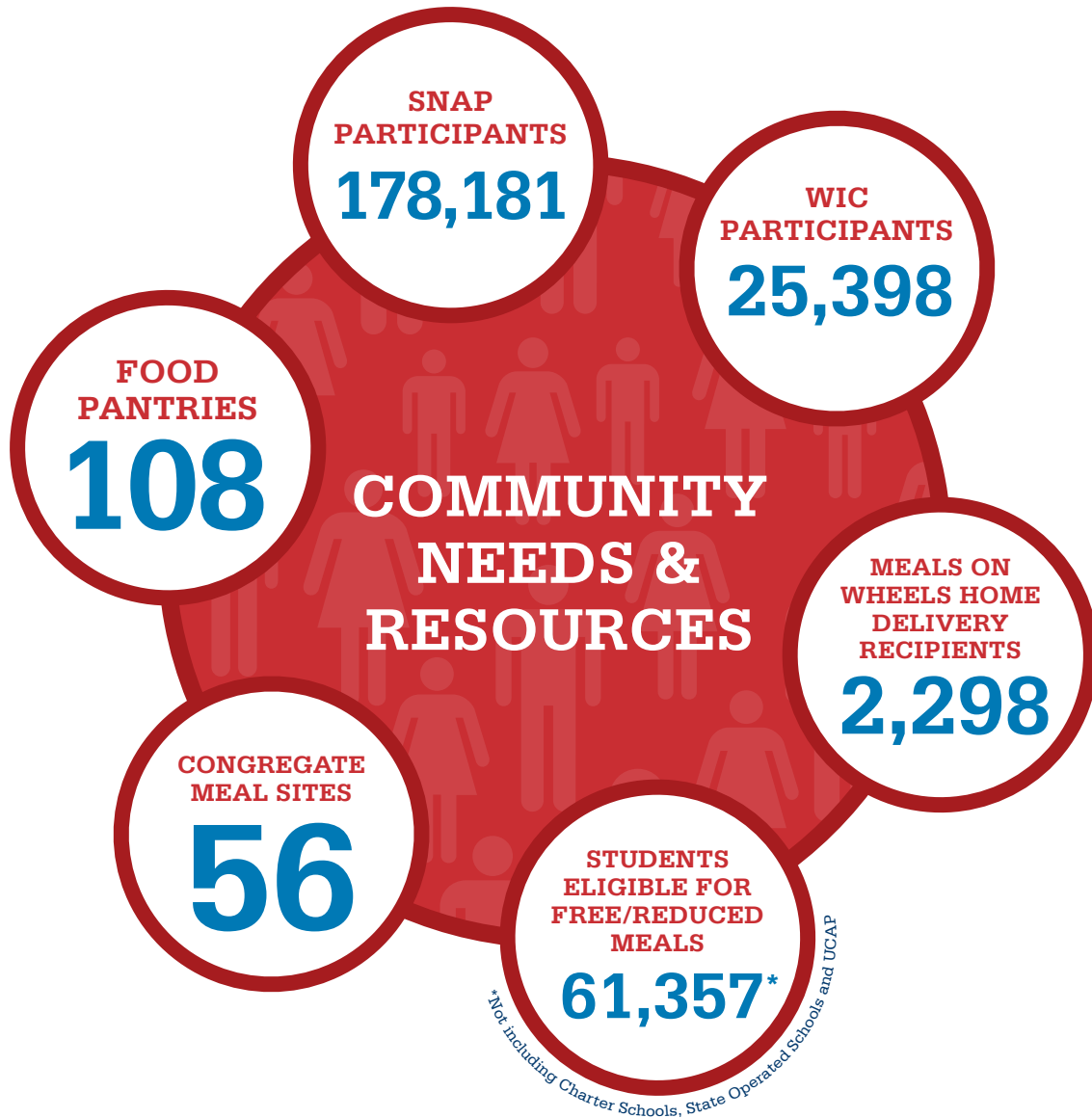
POPULATION 1,052,567



RHODE ISLAND FOOD SYSTEM
2015 SNAPSHOT

RHODE ISLAND

POPULATION 1,052,567



DID YOU KNOW?

Rhode Island is the first state in the country in which all school districts purchase locally grown fruits and vegetables.

STATE FOOD SYSTEM DATA

BUSINESSES

7,023

JOBS

65,605

RHODE ISLAND FOOD SYSTEM
2015 SNAPSHOT

BARRINGTON

POPULATION 16,310



RHODE ISLAND FOOD SYSTEM
2015 SNAPSHOT

BARRINGTON

POPULATION 16,310



DID YOU KNOW?

The former Vitullo Farm, now owned by the town, has housed the Barrington Community Garden since 2014, and the Town is looking at leasing a portion of the site for organic farming.

STATE FOOD SYSTEM DATA

BUSINESSES

7,023

JOBS

65,605

RHODE ISLAND FOOD SYSTEM
2015 SNAPSHOT

BRISTOL

POPULATION 22,954



RHODE ISLAND FOOD SYSTEM
2015 SNAPSHOT

BRISTOL

POPULATION 22,954



DID YOU KNOW?

Bristol's community garden was launched in 2015 on municipal land behind the Town Recreation Center, and provides plots to residents and the local 4H Club.

STATE FOOD SYSTEM DATA

BUSINESSES

7,023

JOBS

65,605

RHODE ISLAND FOOD SYSTEM
2015 SNAPSHOT

BURRILLVILLE

POPULATION 15,955



RHODE ISLAND FOOD SYSTEM
2015 SNAPSHOT

BURRILLVILLE

POPULATION 15,955



DID YOU KNOW?

Started in 1976, Daniele Foods was one of the first companies to make charcuterie in the United States, and now ships over 23 million pounds of cured meat to countries around the world every year.

STATE FOOD SYSTEM DATA

BUSINESSES

7,023

JOBS

65,605

RHODE ISLAND FOOD SYSTEM
2015 SNAPSHOT

CENTRAL FALLS

POPULATION 19,376



RHODE ISLAND FOOD SYSTEM
2015 SNAPSHOT

CENTRAL FALLS

POPULATION 19,376



DID YOU KNOW?

In the 18th and 19th centuries, Central Falls was known as "Chocolateville" for its innovation and entrepreneurial spirit as a chocolate manufacturer.

STATE FOOD SYSTEM DATA

BUSINESSES

7,023

JOBS

65,605

RHODE ISLAND FOOD SYSTEM
2015 SNAPSHOT

CHARLESTOWN

POPULATION 7,827



RHODE ISLAND FOOD SYSTEM
2015 SNAPSHOT

CHARLESTOWN

POPULATION 7,827



DID YOU KNOW?

Charlestown is the “composting center” of Rhode Island: home to Earth Care Farm, RI’s oldest operating farm composter, and the Worm Ladies of Charlestown.

STATE FOOD SYSTEM DATA

BUSINESSES

7,023

JOBS

65,605

RHODE ISLAND FOOD SYSTEM
2015 SNAPSHOT

COVENTRY

POPULATION 35,014



RHODE ISLAND FOOD SYSTEM
2015 SNAPSHOT

COVENTRY

POPULATION 35,014



DID YOU KNOW?

Coventry boasts the only commercial New England cranberry bog outside of Massachusetts: started in the 1850s, the 103-acre cranberry operation is run by Greene Company Cranberries.

STATE FOOD SYSTEM DATA

BUSINESSES

7,023

JOBS

65,605

RHODE ISLAND FOOD SYSTEM
2015 SNAPSHOT

CRANSTON

POPULATION 80,387



RHODE ISLAND FOOD SYSTEM
2015 SNAPSHOT

CRANSTON

POPULATION 80,387



DID YOU KNOW?

Urban Edge Farm, managed by the Southside Community Land Trust, is a successful collaborative farming model. Seven farm businesses operate on the 50-acre parcel, purchased and protected by the State's farmland preservation program.

STATE FOOD SYSTEM DATA

BUSINESSES

7,023

JOBS

65,605

RHODE ISLAND FOOD SYSTEM
2015 SNAPSHOT

CUMBERLAND

POPULATION 33,506



RHODE ISLAND FOOD SYSTEM
2015 SNAPSHOT

CUMBERLAND

POPULATION 33,506



DID YOU KNOW?

Franklin Farm is a town-owned historic farm and community garden, recently added to the National Register of Historic Places, which donates food to the Rhode Island Community Food Bank.

STATE FOOD SYSTEM DATA

BUSINESSES

7,023

JOBS

65,605

RHODE ISLAND FOOD SYSTEM
2015 SNAPSHOT
EAST GREENWICH

POPULATION 13,146



RHODE ISLAND FOOD SYSTEM
2015 SNAPSHOT

EAST GREENWICH

POPULATION 13,146



DID YOU KNOW?

Briggs-Boesch Farm, which dates back to 1672, was purchased by the East Greenwich Municipal Land Trust from the Boesch family in 2001, and has been the home of Pat's Pastured since 2011.

STATE FOOD SYSTEM DATA

BUSINESSES

7,023

JOBS

65,605

RHODE ISLAND FOOD SYSTEM
2015 SNAPSHOT
EAST PROVIDENCE

POPULATION 47,037



RHODE ISLAND FOOD SYSTEM
2015 SNAPSHOT

EAST PROVIDENCE

POPULATION 47,037



DID YOU KNOW?

Since 1881, A.B. Munroe Dairy has delivered fresh milk to Rhode Island homes from its bottling and processing plant located at Brow Street.

STATE FOOD SYSTEM DATA

BUSINESSES

7,023

JOBS

65,605

RHODE ISLAND FOOD SYSTEM
2015 SNAPSHOT

EXETER

POPULATION 6,425



RHODE ISLAND FOOD SYSTEM
2015 SNAPSHOT

EXETER

POPULATION 6,425



DID YOU KNOW?

Founded in 1902 as a dairy and milk delivery operation, Schartner Farms today grows fruits and vegetables on 150 acres in Exeter, and produces its own line of local jams.

STATE FOOD SYSTEM DATA

BUSINESSES

7,023

JOBS

65,605

RHODE ISLAND FOOD SYSTEM
2015 SNAPSHOT

FOSTER

POPULATION 4,606



RHODE ISLAND FOOD SYSTEM
2015 SNAPSHOT

FOSTER

POPULATION 4,606



DID YOU KNOW?

Foster boasts over 50 farms.

STATE FOOD SYSTEM DATA

BUSINESSES

7,023

JOBS

65,605

RHODE ISLAND FOOD SYSTEM
2015 SNAPSHOT

GLOCESTER

POPULATION 9,746



RHODE ISLAND FOOD SYSTEM
2015 SNAPSHOT

GLOCESTER

POPULATION 9,746



DID YOU KNOW?

Ponaganset High School has two greenhouses, aquaculture facilities, and a sustainable gardening area; each year, students participating in Future Farmers of America prepare a banquet serving food raised onsite.

STATE FOOD SYSTEM DATA

BUSINESSES

7,023

JOBS

65,605

RHODE ISLAND FOOD SYSTEM
2015 SNAPSHOT

HOPKINTON

POPULATION 8,188



RHODE ISLAND FOOD SYSTEM
2015 SNAPSHOT

HOPKINTON

POPULATION 8,188



DID YOU KNOW?

The Rhode Island Maple Syrup Producers Association (RIMSPA) was formed in 2012 and is based in Ashaway.

STATE FOOD SYSTEM DATA

BUSINESSES

7,023

JOBS

65,605

RHODE ISLAND FOOD SYSTEM
2015 SNAPSHOT

JAMESTOWN

POPULATION 5,405



RHODE ISLAND FOOD SYSTEM
2015 SNAPSHOT

JAMESTOWN

POPULATION 5,405



DID YOU KNOW?

On land leased from a private owner, the non-profit Jamestown Community Farm sends about 12 tons of fresh produce to five different food pantries around the state each growing season.

STATE FOOD SYSTEM DATA

BUSINESSES

7,023

JOBS

65,605

RHODE ISLAND FOOD SYSTEM
2015 SNAPSHOT

JOHNSTON

POPULATION 28,769



RHODE ISLAND FOOD SYSTEM
2015 SNAPSHOT

JOHNSTON

POPULATION 28,769



DID YOU KNOW?

Operating since 1935, Baffoni's Poultry Farm raises all-natural, cage-free chicken, and is home to Rhode Island's first and only USDA certified poultry slaughterhouse.

STATE FOOD SYSTEM DATA

BUSINESSES

7,023

JOBS

65,605

RHODE ISLAND FOOD SYSTEM
2015 SNAPSHOT
LINCOLN

POPULATION 21,105



RHODE ISLAND FOOD SYSTEM
2015 SNAPSHOT

LINCOLN

POPULATION 21,105



DID YOU KNOW?

Lincoln High School's greenhouse was started in 2004 and supplies the school's culinary class and cafeteria with fresh, organic herbs, including basil, parsley, oregano, rosemary, and thyme.

STATE FOOD SYSTEM DATA

BUSINESSES

7,023

JOBS

65,605

RHODE ISLAND FOOD SYSTEM
2015 SNAPSHOT

LITTLE COMPTON

POPULATION 3,492



RHODE ISLAND FOOD SYSTEM
2015 SNAPSHOT

LITTLE COMPTON

POPULATION 3,492



DID YOU KNOW?

Gray's Grist Mill in Adamsville is Rhode Island's oldest continually operating grist mill, and one of the oldest grist mills in New England.

STATE FOOD SYSTEM DATA

BUSINESSES

7,023

JOBS

65,605

RHODE ISLAND FOOD SYSTEM
2015 SNAPSHOT

MIDDLETOWN

POPULATION 16,150



RHODE ISLAND FOOD SYSTEM
2015 SNAPSHOT

MIDDLETOWN

POPULATION 16,150



DID YOU KNOW?

Newport Vineyards, originally planted in 1977, is now New England's largest grower of wine grapes with 52 vineyard acres.

STATE FOOD SYSTEM DATA

BUSINESSES

7,023

JOBS

65,605

RHODE ISLAND FOOD SYSTEM
2015 SNAPSHOT

NARRAGANSETT

POPULATION 15,868



RHODE ISLAND FOOD SYSTEM
2015 SNAPSHOT

NARRAGANSETT

POPULATION 15,868



DID YOU KNOW?

The Port of Galilee, which contains 40 piers and serves approximately 230 commercial vessels, is ranked 4th largest in New England and 26th largest in the US in dollar value of seafood landed.

STATE FOOD SYSTEM DATA

BUSINESSES

7,023

JOBS

65,605

RHODE ISLAND FOOD SYSTEM
2015 SNAPSHOT

NEW SHOREHAM

POPULATION 1,051



RHODE ISLAND FOOD SYSTEM
2015 SNAPSHOT

NEW SHOREHAM

POPULATION 1,051



DID YOU KNOW?

Chris Warfel, owner of Sun Farm Oysters on Great Salt Pond in Block Island, developed a solar and wind powered upweller, a device that keeps water flowing over baby oysters so that they can grow.

STATE FOOD SYSTEM DATA

BUSINESSES

7,023

JOBS

65,605

RHODE ISLAND FOOD SYSTEM
2015 SNAPSHOT

NEWPORT

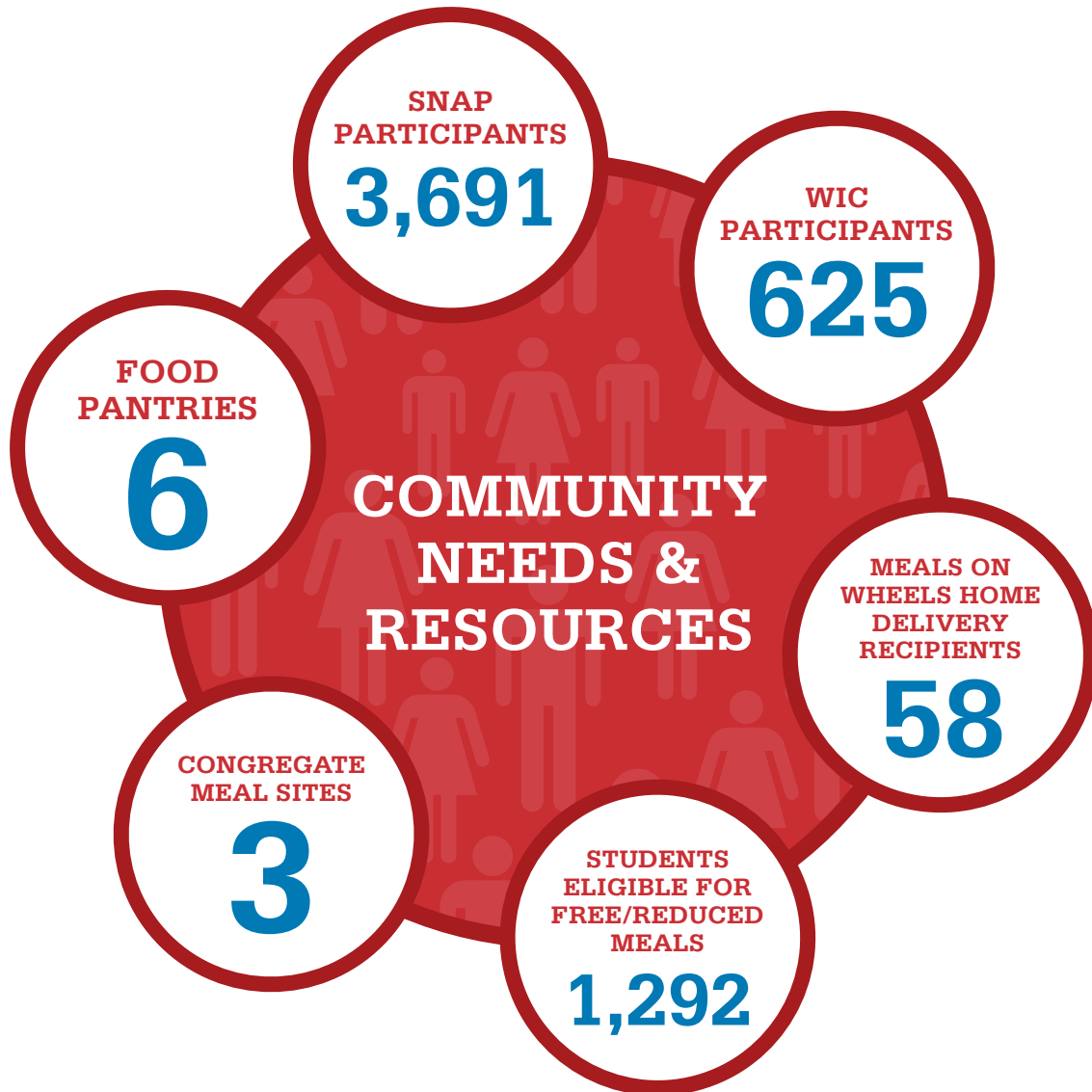
POPULATION 24,672



RHODE ISLAND FOOD SYSTEM
2015 SNAPSHOT

NEWPORT

POPULATION 24,672



DID YOU KNOW?

In 2014, approximately 786,000 pounds of lobster were harvested by Newport fishermen, valued at \$3.8 million.

STATE FOOD SYSTEM DATA

BUSINESSES

7,023

JOBS

65,605

RHODE ISLAND FOOD SYSTEM
2015 SNAPSHOT

NORTH KINGSTOWN

POPULATION 26,486



RHODE ISLAND FOOD SYSTEM
2015 SNAPSHOT

NORTH KINGSTOWN

POPULATION 26,486



DID YOU KNOW?

Narrow Lane Orchard in North Kingstown has diversified the orchard and extended the length of its pick-your-own season by growing fourteen kinds of peaches and twelve kinds of apples, including many heirloom varieties.

STATE FOOD SYSTEM DATA

BUSINESSES

7,023

JOBS

65,605

RHODE ISLAND FOOD SYSTEM
2015 SNAPSHOT

NORTH PROVIDENCE

POPULATION 32,078



RHODE ISLAND FOOD SYSTEM
2015 SNAPSHOT

NORTH PROVIDENCE

POPULATION 32,078



DID YOU KNOW?

North Providence's Yacht Club Soda, one of only two independent soda bottlers in Rhode Island, celebrates its 100th anniversary in 2015.

STATE FOOD SYSTEM DATA

BUSINESSES

7,023

JOBS

65,605

RHODE ISLAND FOOD SYSTEM
2015 SNAPSHOT

NORTH SMITHFIELD

POPULATION 11,967



RHODE ISLAND FOOD SYSTEM
2015 SNAPSHOT

NORTH SMITHFIELD

POPULATION 11,967



DID YOU KNOW?

North Smithfield schools recycle their kitchen food waste by sending it to My Blue Heaven Farm in Pascoag for use as pig feed.

STATE FOOD SYSTEM DATA

BUSINESSES

7,023

JOBS

65,605

RHODE ISLAND FOOD SYSTEM
2015 SNAPSHOT

PAWTUCKET

POPULATION 71,148



RHODE ISLAND FOOD SYSTEM
2015 SNAPSHOT

PAWTUCKET

POPULATION 71,148



DID YOU KNOW?

Pawtucket is home to New England's largest indoor farmers market, the Farm Fresh RI Wintertime Farmers Market, which features almost 70 local food producers and artisans selling each week between November and May.

STATE FOOD SYSTEM DATA

BUSINESSES

7,023

JOBS

65,605

RHODE ISLAND FOOD SYSTEM
2015 SNAPSHOT

PORTSMOUTH

POPULATION 17,389



RHODE ISLAND FOOD SYSTEM
2015 SNAPSHOT

PORTSMOUTH

POPULATION 17,389



DID YOU KNOW?

Escobar's Highland Farm was one of the founding farms of the Rhode Island Dairy Farms Cooperative supplying Rhody Fresh Milk, and is host to the first female dairy insemination technician in southern New England.

STATE FOOD SYSTEM DATA

BUSINESSES

7,023

JOBS

65,605

RHODE ISLAND FOOD SYSTEM
2015 SNAPSHOT

PROVIDENCE

POPULATION 178,042



RHODE ISLAND FOOD SYSTEM
2015 SNAPSHOT

PROVIDENCE

POPULATION 178,042



DID YOU KNOW?

Providence boasts the highest number of community gardens in the State: the City's comprehensive plan includes the goal that every Providence resident live within a 10-minute walk of a community garden.

STATE FOOD SYSTEM DATA

BUSINESSES

7,023

JOBS

65,605

RHODE ISLAND FOOD SYSTEM
2015 SNAPSHOT

RICHMOND

POPULATION 7,708



RHODE ISLAND FOOD SYSTEM
2015 SNAPSHOT

RICHMOND

POPULATION 7,708



DID YOU KNOW?

Richmond is home to the Washington County Fair, Rhode Island's largest agricultural event, which will celebrate its 50-year anniversary in 2016.

STATE FOOD SYSTEM DATA

BUSINESSES

7,023

JOBS

65,605

RHODE ISLAND FOOD SYSTEM
2015 SNAPSHOT

SCITUATE

POPULATION 10,329



RHODE ISLAND FOOD SYSTEM
2015 SNAPSHOT

SCITUATE

POPULATION 10,329



DID YOU KNOW?

North Scituate's Ponaganset Middle School has a Living Campus with an Edible Landscape and Outdoor Classroom: eight raised beds next to the cafeteria are being used to grow edibles such as blueberries, strawberries and herbs.

STATE FOOD SYSTEM DATA

BUSINESSES

7,023

JOBS

65,605

RHODE ISLAND FOOD SYSTEM
2015 SNAPSHOT

SMITHFIELD

POPULATION 21,430



RHODE ISLAND FOOD SYSTEM
2015 SNAPSHOT

SMITHFIELD

POPULATION 21,430



DID YOU KNOW?

Blackbird Farm in Smithfield raises over 100 head of Angus cattle and over 300 American Heritage Berkshire pigs on 250 acres, supplying beef and pork to more than 30 southern New England restaurants and food processors.

STATE FOOD SYSTEM DATA

BUSINESSES

7,023

JOBS

65,605

RHODE ISLAND FOOD SYSTEM
2015 SNAPSHOT
SOUTH KINGSTOWN

POPULATION 30,639



RHODE ISLAND FOOD SYSTEM
2015 SNAPSHOT
SOUTH KINGSTOWN

POPULATION 30,639



DID YOU KNOW?

Located in Wakefield, the South County Food Co-op was established in 1970 and is the oldest operating Food Co-op in Rhode Island.

STATE FOOD SYSTEM DATA

BUSINESSES

7,023

JOBS

65,605

RHODE ISLAND FOOD SYSTEM
2015 SNAPSHOT

TIVERTON

POPULATION 15,780



RHODE ISLAND FOOD SYSTEM
2015 SNAPSHOT

TIVERTON

POPULATION 15,780



DID YOU KNOW?

Tiverton is home to one of the top ice cream shops in the country, Gray's Ice Cream, founded in 1923 when Annie Gray began selling ice cream from the back window of her house.

STATE FOOD SYSTEM DATA

BUSINESSES

7,023

JOBS

65,605

RHODE ISLAND FOOD SYSTEM
2015 SNAPSHOT

WARREN

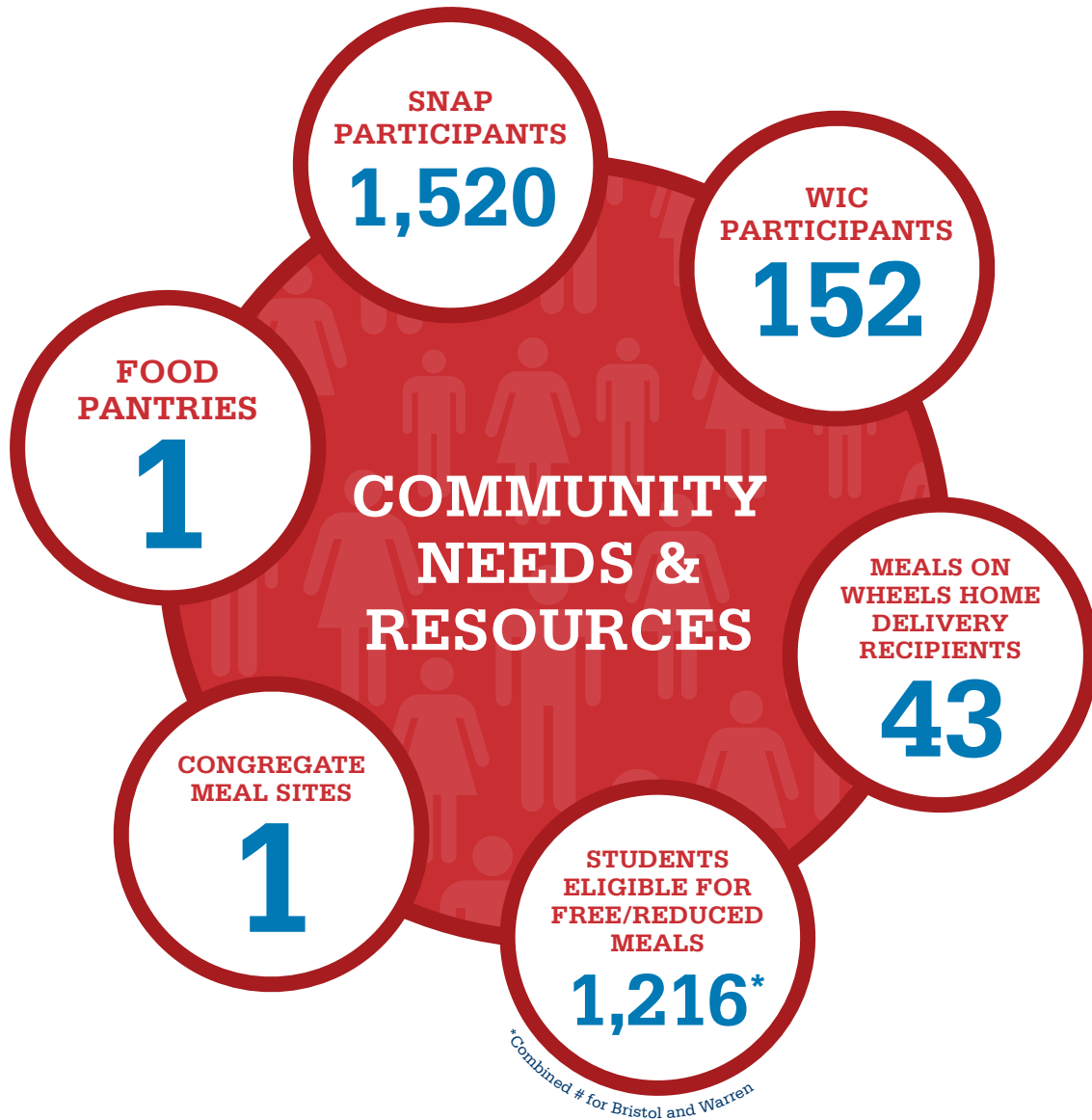
POPULATION 10,611



RHODE ISLAND FOOD SYSTEM
2015 SNAPSHOT

WARREN

POPULATION 10,611



DID YOU KNOW?

Hope & Main is the first and only culinary incubator established in Rhode Island, housed in a 100-year-old schoolhouse on historic Main Street in Warren.

STATE FOOD SYSTEM DATA

BUSINESSES

7,023

JOBS

65,605

RHODE ISLAND FOOD SYSTEM
2015 SNAPSHOT

WARWICK

POPULATION 82,672



RHODE ISLAND FOOD SYSTEM
2015 SNAPSHOT

WARWICK

POPULATION 82,672



DID YOU KNOW?

Warwick has more residents with commercial fishing licenses than any other municipality in Rhode Island.

STATE FOOD SYSTEM DATA

BUSINESSES

7,023

JOBS

65,605

RHODE ISLAND FOOD SYSTEM
2015 SNAPSHOT
WEST GREENWICH

POPULATION 6,135



RHODE ISLAND FOOD SYSTEM
2015 SNAPSHOT
WEST GREENWICH
POPULATION 6,135



DID YOU KNOW?

Roch's Fresh Foods recently retrofitted a vacant facility in West Greenwich to process fresh produce, creating 25 new jobs and making it easier for schools and institutions to purchase from Rhode Island farmers.

STATE FOOD SYSTEM DATA

BUSINESSES

7,023

JOBS

65,605

RHODE ISLAND FOOD SYSTEM
2015 SNAPSHOT

WEST WARWICK

POPULATION 29,191



RHODE ISLAND FOOD SYSTEM
2015 SNAPSHOT

WEST WARWICK

POPULATION 29,191



DID YOU KNOW?

The West Warwick Farmers Market is one of the first “Veggie Rx” sites across the country, with 80 enrolled families receiving medical “prescriptions” for local fresh fruit and vegetables that are redeemable at the farmers market.

STATE FOOD SYSTEM DATA

BUSINESSES

7,023

JOBS

65,605

RHODE ISLAND FOOD SYSTEM
2015 SNAPSHOT

WESTERLY

POPULATION 22,787



RHODE ISLAND FOOD SYSTEM
2015 SNAPSHOT

WESTERLY

POPULATION 22,787



DID YOU KNOW?

Westerly Packing started with the Bruno family as a fruit and grocery store in the early 1900's, and is currently the exclusive butcher shop for the Rhode Island Raised Livestock Association.

STATE FOOD SYSTEM DATA

BUSINESSES

7,023

JOBS

65,605

RHODE ISLAND FOOD SYSTEM
2015 SNAPSHOT

WOONSOCKET

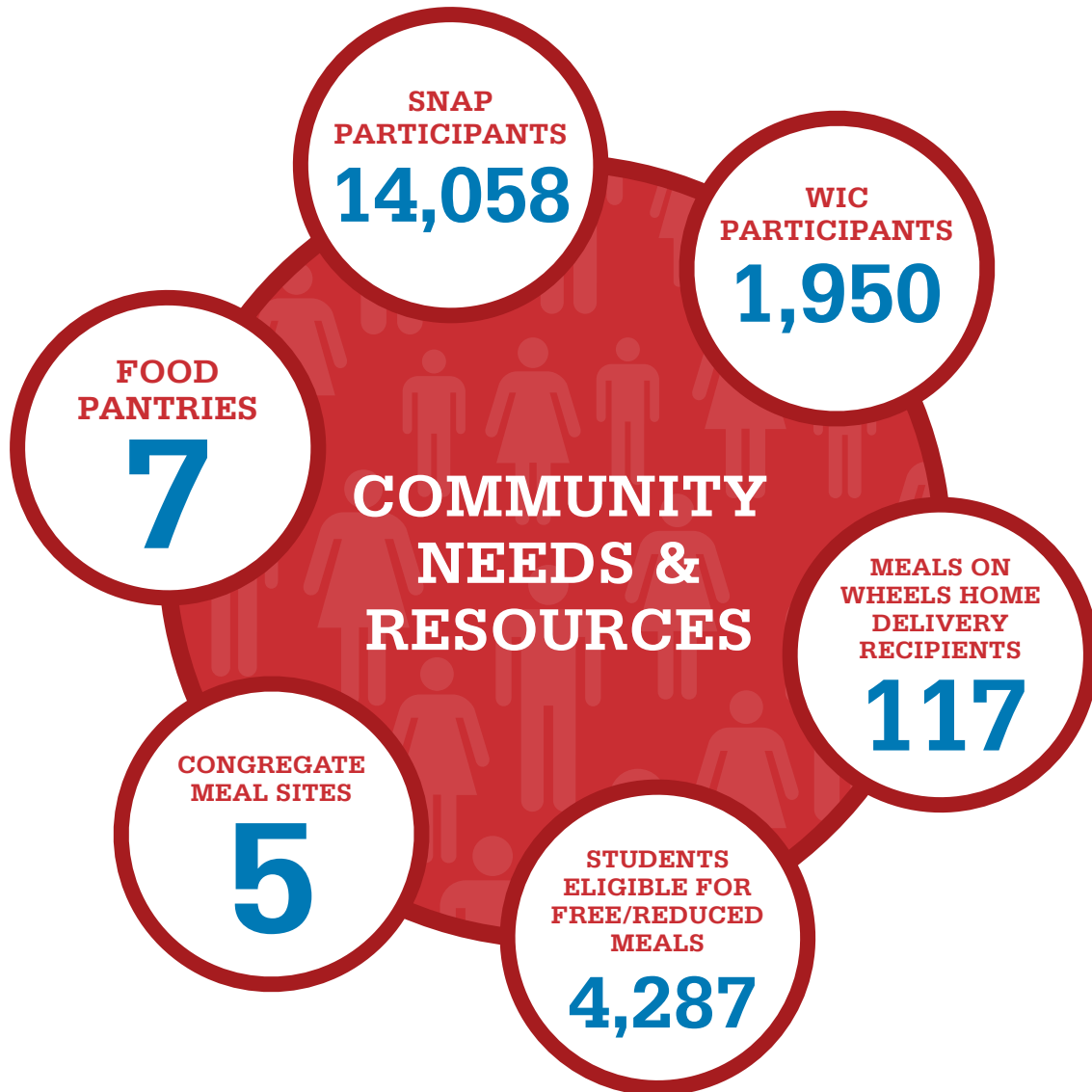
POPULATION 41,186



RHODE ISLAND FOOD SYSTEM
2015 SNAPSHOT

WOONSOCKET

POPULATION 41,186



DID YOU KNOW?

Woonsocket's *Because He Lives* soup kitchen has served over a million meals in its 29 year history, with 11,082 meals served in 2014 alone.

STATE FOOD SYSTEM DATA

BUSINESSES

7,023

JOBS

65,605

RHODE ISLAND FOOD SYSTEM: 2015 SNAPSHOTS

This fact sheet is one of a series developed for every Rhode Island municipality. The Fact Sheets are intended to give Rhode Islanders a better sense of the current impact the food system has on individual communities, and a better understanding of the network of businesses, agencies, organizations and institutions that make up our local food system. A *food system* encompasses all of the processes involved in feeding people: it includes the production, harvesting, and processing of food; its distribution and marketing; its consumption (whether at home, in schools and institutions, or in restaurants); and ultimately, the recycling or disposal of food waste. The fact sheets present a dynamic “snapshot” of the local food system, and we hope they will stimulate discussion about growing the local food system and using data to track and measure progress. This is a first attempt to pull together data from a range of sources, however, so we invite corrections or additional information that will help us more accurately represent Rhode Island’s local food system.

DEFINITIONS AND DATA SOURCES

POPULATION

Source: US Census Bureau, 2010

RHODE ISLAND FOOD SYSTEM

PRODUCTION & HARVESTING

Farms

The 2012 USDA Census of Agriculture estimates there are 1,243 farms in RI but does not provide data by municipality. No single RI entity maintains a count of farms by municipality. The numbers provided are the best data available at this time.

Sources: RIDEM, Farm Fresh RI website, June 2015

Aquaculture Farms

Includes all aquaculture farms that lease submerged land in state waters.

Source: RI CRMC, June 2015

Commercial Fishers

Includes municipal residents who hold any type of commercial fishing license for fish and/or shellfish.

Source: RIDEM, June 2015

Community Gardens

Includes (1) public/private properties that provide plots of land on which people raise food mainly for household consumption, and (2) public/private properties on which volunteers raise food for the RI Community Food Bank and food pantries.

Sources: Numbers compiled as of June, 2015 from multiple sources, including Farm Fresh RI, a 2014 survey of religious institutions, and municipal planning staff

PROCESSING

Food Processors

Includes businesses that process raw fruits and vegetables, meat, seafood and milk into value-added products.

Source: RIDOH licensee list, accessed May 2015

DISTRIBUTION

Distributors

Includes businesses involved in transporting and warehousing raw and processed foods.

Source: RIDOH licensee list, accessed May 2015

Markets

Includes supermarkets, grocery, and convenience stores.

Source: RIDOH licensee list, accessed May 2015

Farmers Markets

Source: Farm Fresh RI website, June 2015

Farmstands

Source: Farm Fresh RI website, October 2015

CONSUMPTION

Restaurants

Includes full service, limited service, fast food restaurants and food trucks.

Source: RIDOH licensee list, accessed May 2015

Public Schools Purchase Locally Grown Food

Source: RIDE, 2015

RESOURCE RECOVERY

Annual Tons of Residential Food Waste *estimated*

Annual Tons of Commercial Food Waste *estimated*

Municipal Fee to Landfill Residential Food Waste *estimated*

Municipalities currently pay a fee of \$32/ton for waste disposal. Total fee is based on estimated tons of residential food waste.

Source: Estimates provided by RI Resource Recovery Corporation based on 2014 waste tonnage

Food Waste Recycling Facilities

Includes all composting and/or anaerobic digestion facilities that are currently processing food waste with a state license.

Source: RIDEM, June 2015

COMMUNITY NEEDS AND RESOURCES

Participants in SNAP and WIC

Source: URI Center for a Hunger Free America, SNAP and WIC, June 2015

Participants Receiving Meals on Wheels Home Delivery

Includes all individuals receiving meals through Meals on Wheels Home Delivery Service.

Source: Meals on Wheels of RI 2014 statistics

Students Eligible for Free/Reduced Meals

To be eligible for free/reduced meals, a child’s household income must fall below 185% of the federal poverty guideline. Children in foster care, and households receiving SNAP Benefits or in the Rhode Island Works Program are automatically eligible.

Source: 2015 RI KIDS COUNT Factbook

Food Pantries

Includes sites that provide free food to households in need.

Source: RI Community Food Bank Emergency Food Provider List, May 2015

Congregate Meal Sites

Includes sites that provide low or no-cost meals in a group setting for individuals in need.

Source: RI Community Food Bank Emergency Food Provider List, May, 2015; web pages for Senior Services Inc., Meals on Wheels, East Bay CAP, and West Bay CAP.

FOOD JOBS AND FOOD BUSINESSES

Data from Quarterly Census of Employment and Wages, Nonemployer Statistics, and USDA Census of Agriculture, 2012.

Source: ProvPlan, July 2015

