

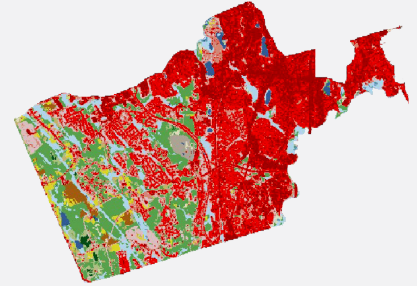
This document is designed to give Rhode Islanders a better understanding of how we produce, harvest, process, distribute, market, and consume food, and how we dispose of food waste. We have created one for every town and city in the state. Visit rifoodcouncil.org to learn more about where this data comes from.

To learn more about next steps, please check out the RIFPC *Quick Action Sheet* and the *Planning Accessible, Equitable, and Resilient Municipal Food Systems Toolkit* or contact us at info@rifoodpolicycouncil.org to schedule an exploratory conversation.

POPULATION: 82,934

LAND USE:

- Developed
- Forest
- Agriculture
- Water
- Other Land



Food Economy

The process of growing, manufacturing, distributing, and selling food encompasses a broad range of industries and sectors, collectively called the food economy. The data presented here can help municipalities understand the current impacts, future opportunities, and potential challenges to growing the community's food economy.

	City	State
Restaurants	283	4,080
Farmers Markets	3	71
Food Markets	82	1,155
SNAP Dollars & Cash Benefits at Farmers Markets	\$1,458.00	\$237,130.38
Food Processors	36	603
Food Distributors	18	151
Annual Municipal Fee to Landfill Residential Food Waste	\$245,398.44	\$3,552,688.50

Land Use & Sustainability

More than any other level of government, municipalities maintain broad control of their land use and its related sustainability impacts. The data presented under Land Use & Sustainability may be used to understand how land is currently being used and to create alternative plans that account for the need to have a sustainable and resilient local food system.

	City	State
Aquaculture Farms	0	84
Commercial Fisheries	18	720
Farms	51	1,043
Annual Tons of Residential Food Waste	5,221	75,589
Food Waste Recycling Facilities	0	4
Public School District Purchases Locally Grown Produce	Yes	39

Food Access & Security

Providers of free and low cost food options interface with the community in different ways to meet people where they are. The data in Food Access & Security can help municipalities identify how community members access these critical resources and evaluate how to maximize the impacts of Federal food assistance programs.

	City	State
Congregate Meal Sites	0	74
Food Pantries	4	133
Meals on Wheels Is Home Delivery Recipients	227	3,029
SNAP Participants	5,679	89,100
Students Enrolled for Free/Reduced Meals	10,324	140,721
WIC Participants	1,244	18,379