



# Hope's Harvest was founded in 2018



From 2018-2024, **450+ volunteers** spent **12,100+ hours** rescuing...



**1.3 million lbs** of fresh, healthy, local fruits and vegetables from...



**60+ farms** across Rhode Island and Southeastern MA, and...

Distributed to **90 hunger relief agencies in RI**, serving over **35,000 individuals** per month.

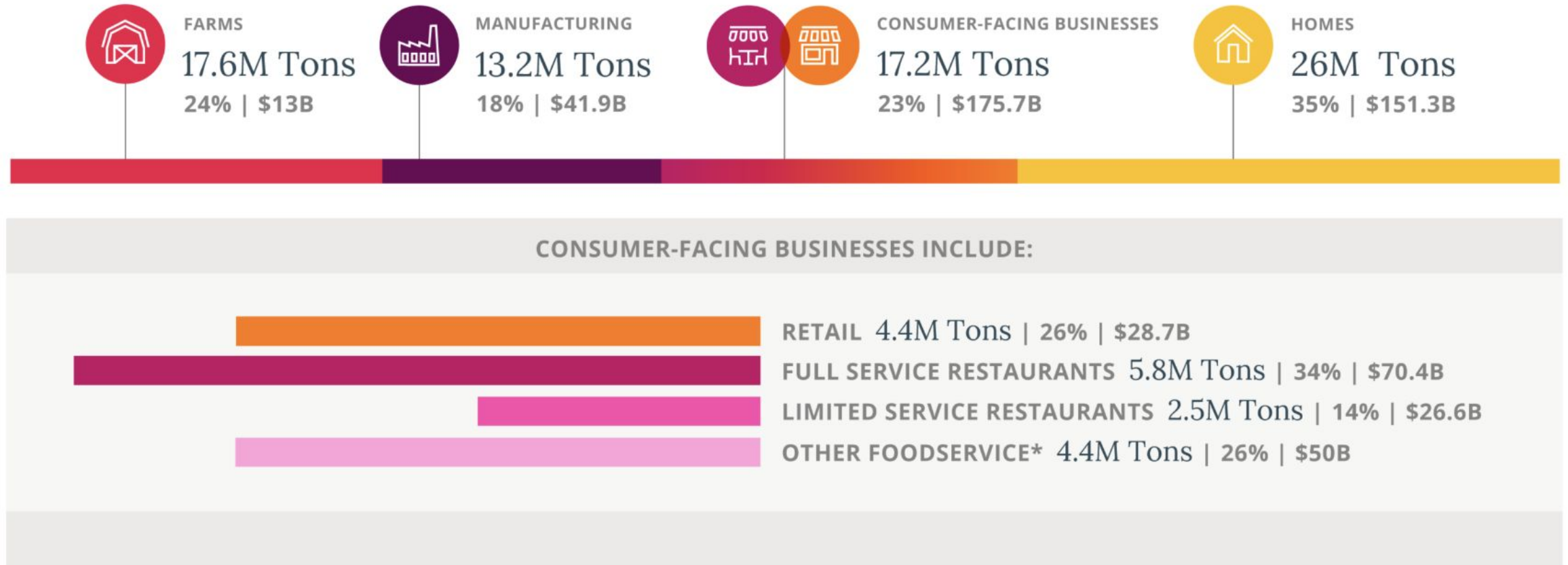




# Food Waste

- The USA discards more food than any other country
- **31% of our food supply goes uneaten every year**
  - **Only 2% of this gets gleaned**
- Food takes up more space in US landfills than anything else

# Surplus Food Across the Supply Chain



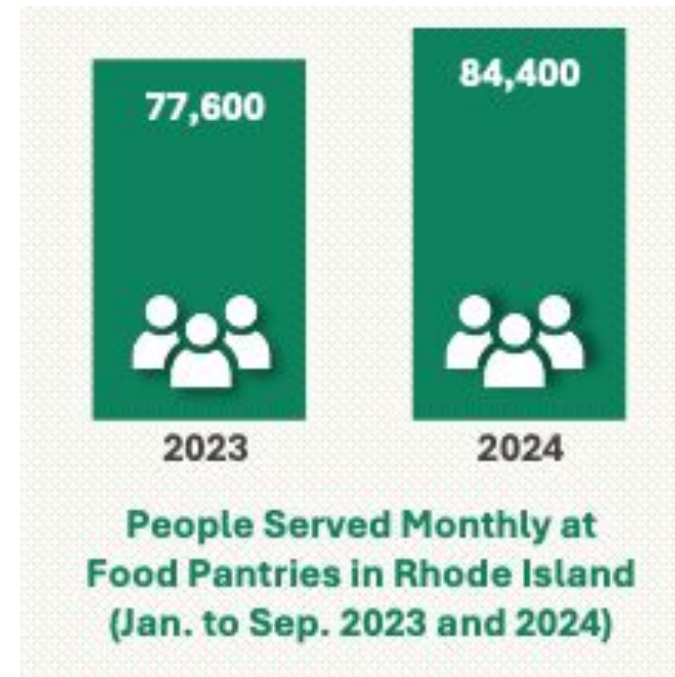
Source: ReFED/2023 Data (Published Feb 2025)





# 2024 Status Report on Hunger in Rhode Island

- In 2021, 34 million U.S. Americans, or 10-11% of the population, were food insecure
- 38% of RI households face difficulty affording adequate food





RHODE ISLAND COMMUNITY  
FOOD BANK



↓ 32%

SNAP Benefits  
2023



↑ 11%

Food Prices in  
Rhode Island 2023



↑ 14%

Rent in Rhode  
Island 2023

# Hope's Harvest Mission

*To improve the livelihoods of local farmers, increase food security for RI's most vulnerable residents, and get everyone engaged in strengthening the food system by eliminating on-farm food waste in Rhode Island.*



# Hope's Harvest at Farm Fresh RI

```
graph TD; A[Hope's Harvest at Farm Fresh RI] --> B[Gleaning]; A --> C[Surplus Purchasing]; A --> D[Contracting]; A --> E[Farm to Food Pantry]; A --> F[Senior Farmers Market Nutrition Program]; B --> G[Hunger Relief Agencies]; C --> G; D --> G; E --> G; F --> G;
```

The diagram is a flowchart illustrating the distribution of food from Farm Fresh RI. At the top is a dark green rounded rectangle containing the title 'Hope's Harvest at Farm Fresh RI'. Five arrows point downwards from this title to five separate green rectangular boxes arranged in a horizontal row. These boxes are labeled 'Gleaning', 'Surplus Purchasing', 'Contracting', 'Farm to Food Pantry', and 'Senior Farmers Market Nutrition Program'. From the bottom of each of these five boxes, an arrow points downwards to a single orange rounded rectangle at the bottom of the diagram, which is labeled 'Hunger Relief Agencies'.

Gleaning

Surplus  
Purchasing

Contracting

Farm to Food  
Pantry

Senior  
Farmers  
Market  
Nutrition  
Program

Hunger Relief Agencies



# Gleaning

- Gleaning = harvesting excess produce
- Hope's Harvest organizes volunteers to glean from local farms
- We bring this gleaned produce to hunger relief agencies throughout the state
- We're the only farm-based food recovery organization in the state!



# Farmers Market To Food Pantry

- Recovered produce at PVD market since Fall 2022
- Expanded to Hope St. market this summer and increased our food recovered by over 6,100 lbs
- Hoping to expand to 3 more markets this year





# Why would farmers have surplus food?

- Grew more to account for yearly changes
  - Weather
  - Disease
  - Pest issues
- Harvested but went unsold
  - Market can be hard to predict
- Cosmetic blemishes









# Surplus Purchasing

In 2023, we purchased 65,000lbs of surplus apples, carrots, and potatoes. Almost \$43,000 was distributed to 5 partner farms to find a home for this surplus produce.



Brandon Family Farm, West  
Kingston RI

Four Town Farm, Seekonk

Ferolbink Farms, Tiverton

The Local Patch, Portsmouth RI

Boston Area Gleaners, Acton



# Come glean with us!

- Fill out the 2025 Volunteer Orientation & Registration (30 minutes) in June!
- Reach out if you're interested in helping at farmers markets!
- For now:
  - Emails sent out monthly, and later weekly, on Saturdays
  - Keep up on social media!



@hopesharvestri



@hopesharvest





# Questions ?

*HH@farmfreshri.org*



Sign up for our newsletter to receive updates on volunteer opportunities, local food security work, and community events!