

Youth Composting Campaign Initiative

Emma Pautz & Bella Quiroa



TABLE OF CONTENTS

A

Who are we?

Where are we coming from in terms of this initiative?

01

The problem

A big climate issue that RI is facing

02

The solutions

What actions and avenues can be good solutions

03

Moving forward

How do we envision these solutions being applied?

WHO ARE WE?



Emma Pautz

- Senior at Barrington High School
- Been involved in environmental initiatives since 7th grade
- Started composting at middle and high school
- Built a public compost drop-off
- Advocacy project



Bella Quiroa

- Senior at the MET
- Advocacy Project
- Interned with WasteNaut & supported many schools in composting
- Current intern at Save the Bay
- Donated five-gallon buckets for families to start composting

Youth Composting Campaign Initiative

Why did we start, and what have we done?

Why

- Our shared struggles
- Recognizing a need for change, and more schools to start composting

What?

- Our petition
- Engaging with RI Youth - (Social Media)
- Conducting research





01

THE PROBLEM

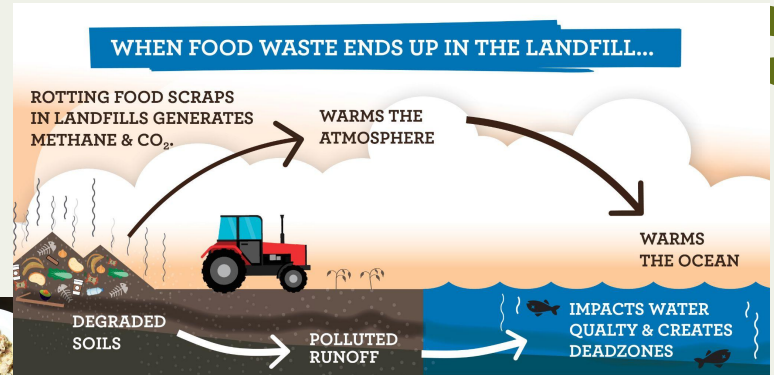
What is a big climate issue RI is currently facing?

A CLIMATE ISSUE THAT THE STATE IS FACING:

An unfunded and not properly enforced composting & food donation mandate

Issues because of this:

- **Impacts our landfill**
 - Harmful cycle
- **Removes possibility for food donation**



02

Our findings

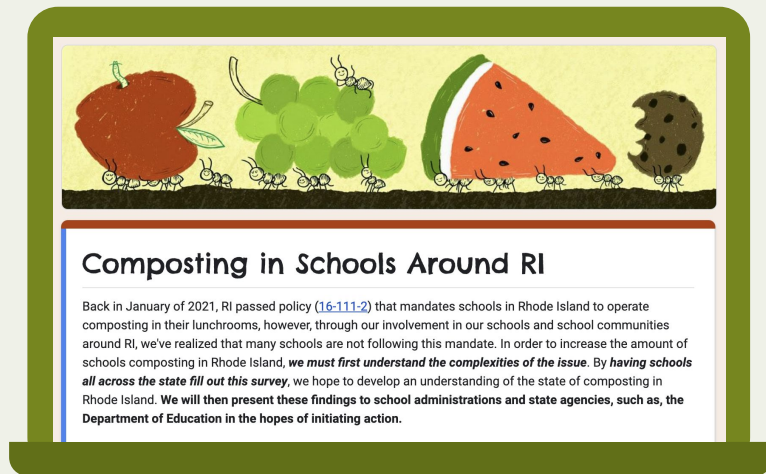
The root of composting in school problems



THE SCHOOL SURVEY

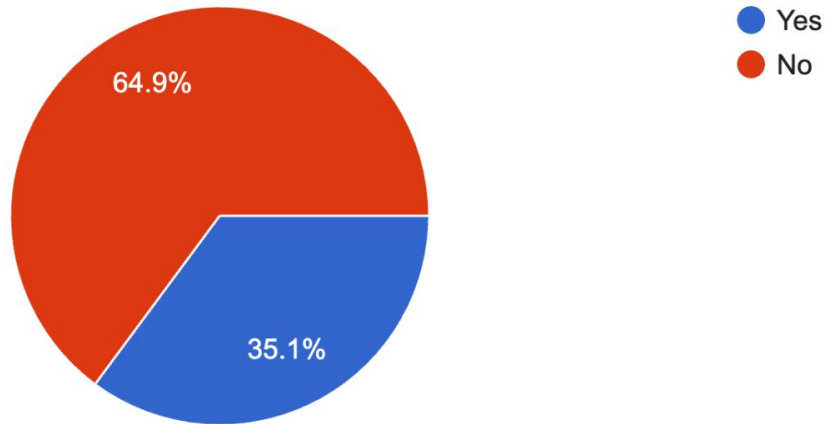
We've sent this survey to many teachers around the state because it will:

- Identify the gap left with this mandate
- Draw the bigger picture of the situation



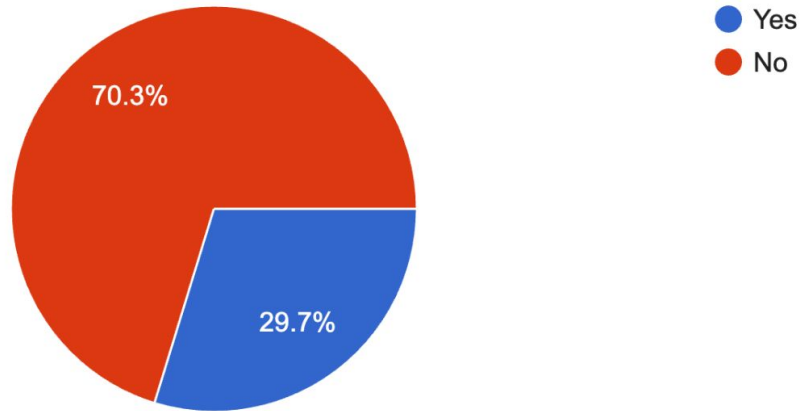
Have you heard of the mandate before?

74 responses



Do you have a composting program at your school? This means that your school collects food surplus, (or food scraps), in addition to trash and recycling in the cafeteria.

74 responses



The Found Flaws

Limiting requirements

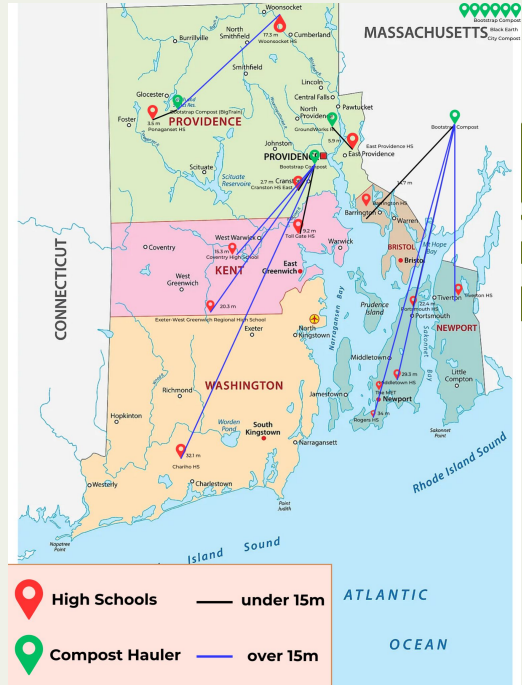
- Tonnage
- Mileage

Lack of accountability

- No audits
- No avenues of communication

No resources or funding

- Schools left with responsibility but no support
- No one knowing they are meant to compost



Amount of Compost (1 Day)	Whole week	Whole Year (36 weeks)	Amount in tons yearly
Average 40 lbs	200 lbs	7,200 lbs	3.6 tons



03

Moving Forward

What could we do to mitigate these issues?

What could be done?



Filling the gaps of information

- Reaching out to people/orgs
 - RIDE, RIFPC, RISRP, RIRRC

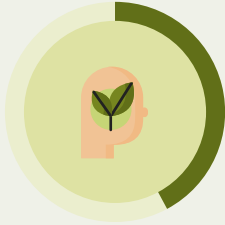
Gathering our info, and sharing it with

- Our local legislators
 - Ensuring they do something about it

Civic Engagement!

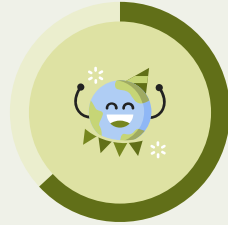


Our Role in Making Change



Raising Awareness

Engaging with audiences via social media, news outlets, and grass roots methods to raise awareness



Youth Engagement

Not only introducing youth to these topics and methods of combating climate change, but empowering them as well



Bridging Gaps

Being the ones to identify these issues, not wait or think we aren't the ones who should be doing it and taking action

THANKS!

Do you have any questions?

bella.quiroa@metmail.org

pautze25@barringtonschools.org

Follow us on social media!

@ri_ycci

