

## NORTH SMITHFIELD

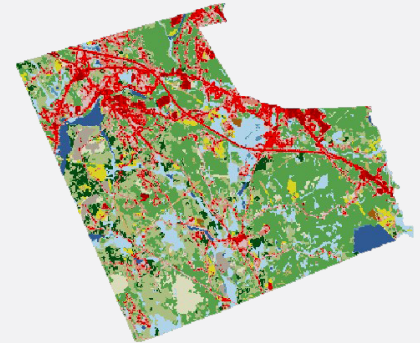
**This document is designed to give Rhode Islanders a better understanding of how we produce, harvest, process, distribute, market, and consume food, and how we dispose of food waste. We have created one for every town and city in the state. Visit [rifoodepolicycouncil.org](https://rifoodepolicycouncil.org) to learn more about where this data comes from.**

To learn more about next steps, please check out the RIFPC *Quick Action Sheet* and the *Planning Accessible, Equitable, and Resilient Municipal Food Systems Toolkit* or contact us at [info@rifoodepolicycouncil.org](mailto:info@rifoodepolicycouncil.org) to schedule an exploratory conversation.

**POPULATION:** 12,588

**LAND USE:**

- Developed
- Forest
- Agriculture
- Water
- Other Land



## Food Economy

The food economy encompasses a broad range of industries and sectors involved in the multi-step process of producing, processing, distributing, and selling food. The data presented here can help municipalities understand the current impacts, future opportunities, and potential challenges to growing the community's food economy.

	City	State
Restaurants	46	5,461
Farmers Markets	0	26
Food Markets	13	1,302
Food Processors	6	703
Food Distributors	6	152
Municipal Fee to Landfill Residential Food Waste	\$42,688.69	\$3,835,384.15



## Land Use & Sustainability

More than any other level of government, municipalities maintain wide control of their land use and its related sustainability impacts. The data presented under Land Use & Sustainability may be used to understand how land is currently being used and to create alternative plans that account for the need to have a sustainable and resilient local food system.

	City	State
Aquaculture Farms	0	83
Commercial Fishers	2	2,416
Farms	16	1,274
Urban Farms	0	33
Acres of Potential Farmland	384	35,085
Food Waste Recycling Facilities	0	6
Year Total Spent by Public School District on Locally Grown Produce	\$13,055	\$ 1,201,611



## Food Access & Security

Providers of free and low cost food options interface with the community in different ways to meet people where they are. The data in Food Access & Security can help municipalities identify how the extent to which current community members are able to access these critical resources and evaluate how to maximize the impacts of these different food assistance programs.

	City	State
Congregate Meal Sites	0	214
Food Pantries	0	118
Meals on Wheels Is Home Delivery Recipients	32	3,042
SNAP Participants	737	143,023
Students Enrolled for Free/Reduced Meals	1,652	117,779
WIC Participants	103	19,297